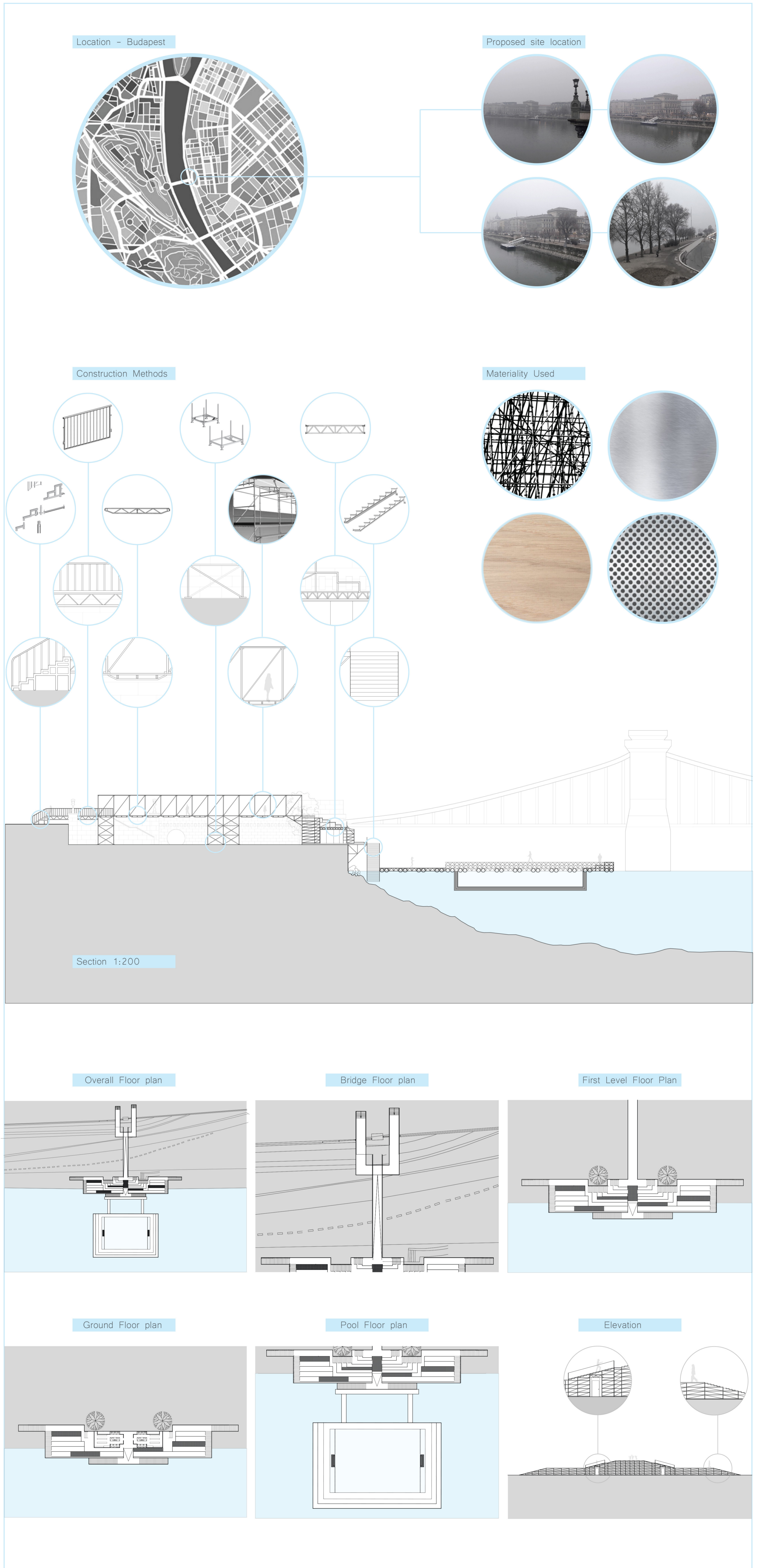


URBAN FRAMES - Spatial Experiments in Budapest



URBAN FRAMES - Spatial Experiments in Budapest

CONNECT!

IRENE CASTRILLO - EVA GARCÍA - ANNA BÜRGERS-LEVAS - FRANCISCO VILAÇA

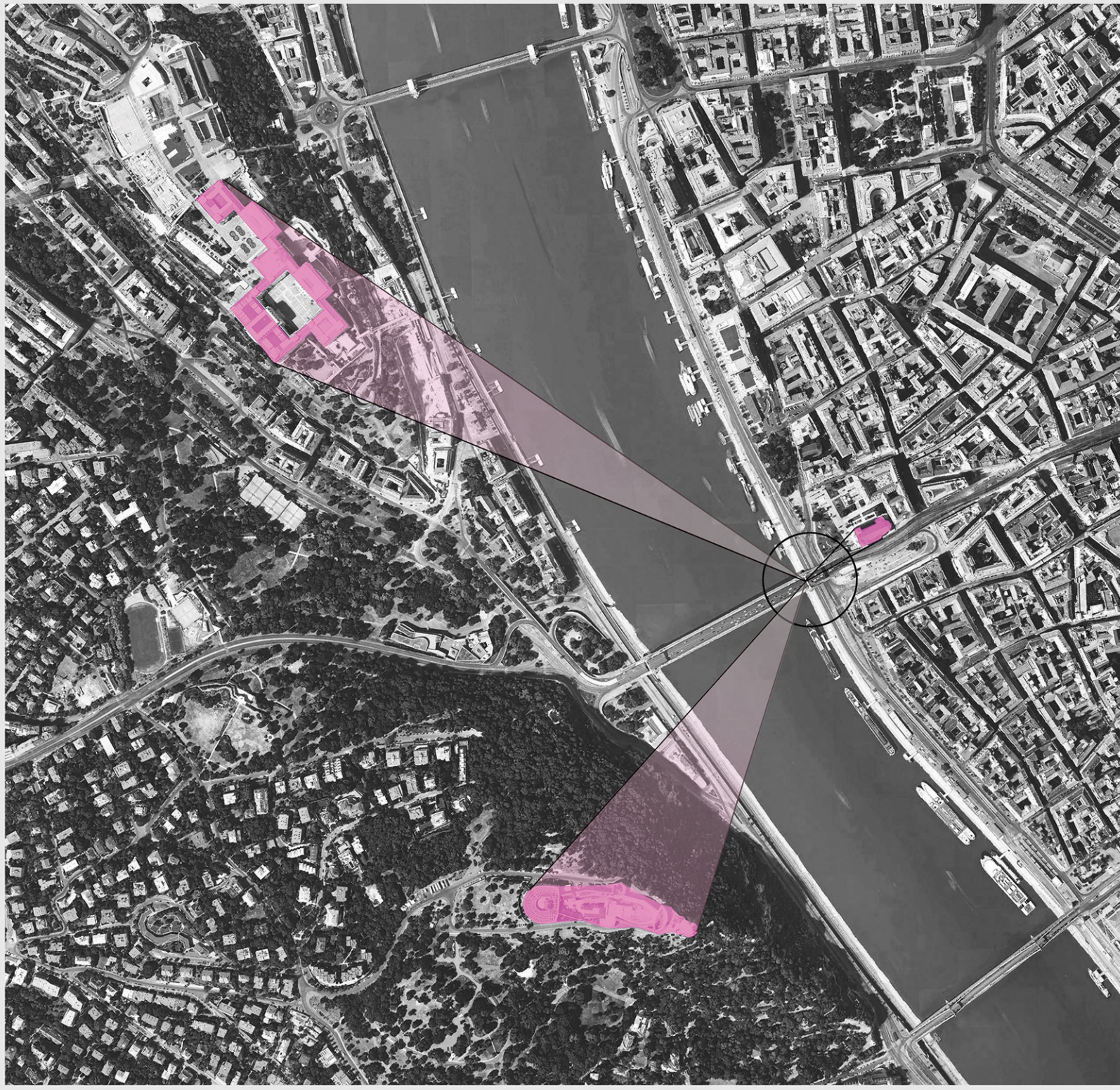
WHERE?



BUDA CASTLE



SZENT GELLERT HIL



THE SITE IS LOCATED AROUND THE ERSÉBET HÍD IN THE CITYCENTER. THE VISUAL CONNECTION TO THE BUDA CASTLE, THE SZÉNT GELLÉRT HILL AND THE CHURCH MAKES IT A VALUABLE SPOT WITH POTENTIAL TO BE AN INTERSECTION FOR TOURIST AS WELL AS LOCALS. RIGHT NOW IT HAS NOT ENOUGH IMPORTANCE AND IS JUST A TRAFFIC AREA.

WHY?: SWOT ANALYSIS

STRENGTHS

- + PUBLIC TRANSPORT CONNECTIONS
- + FACING GELLERT HILL
- + FACING CASTLE

WEAKNESSES

- + TRAFFIC
- + POOR PEDESTRIAN CIRCULATION
- + GREY AREA

THREATS

- + FORGET THE CHURCH
- + URBAN DESIGN FOR VEHICLES
- + NOISE

OPPORTUNITIES

- + EASE TO LIVEN UP THE PLACE BY ADDING COLOUR
- + BEAUTIFUL VIEWS TO BUDA SIDE
- + PLEASANT PEDESTRIAN PATH BY THE DANUBE

GOAL?

RECLAIM THIS AREA BACK TO THE CITIZENS BY CREATING A CONNECTION BETWEEN THE CITY AND THE RIVER AND ADDING SOME COLOUR CONTRASTING THE CURRENT SITUATION. DESIGN A TEMPORARY PROJECT.

MAIN IDEAS

1. SMALL SCALE

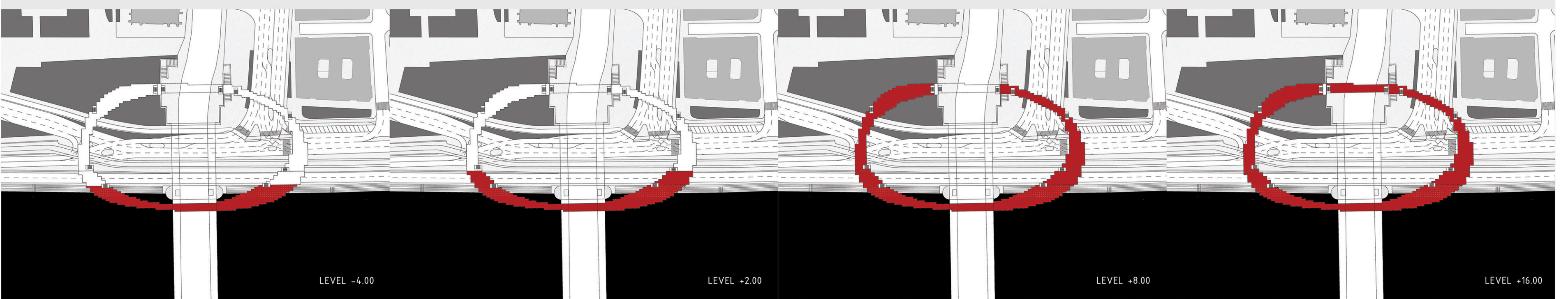
2. BRIDGE

3. SCAFFOLDING

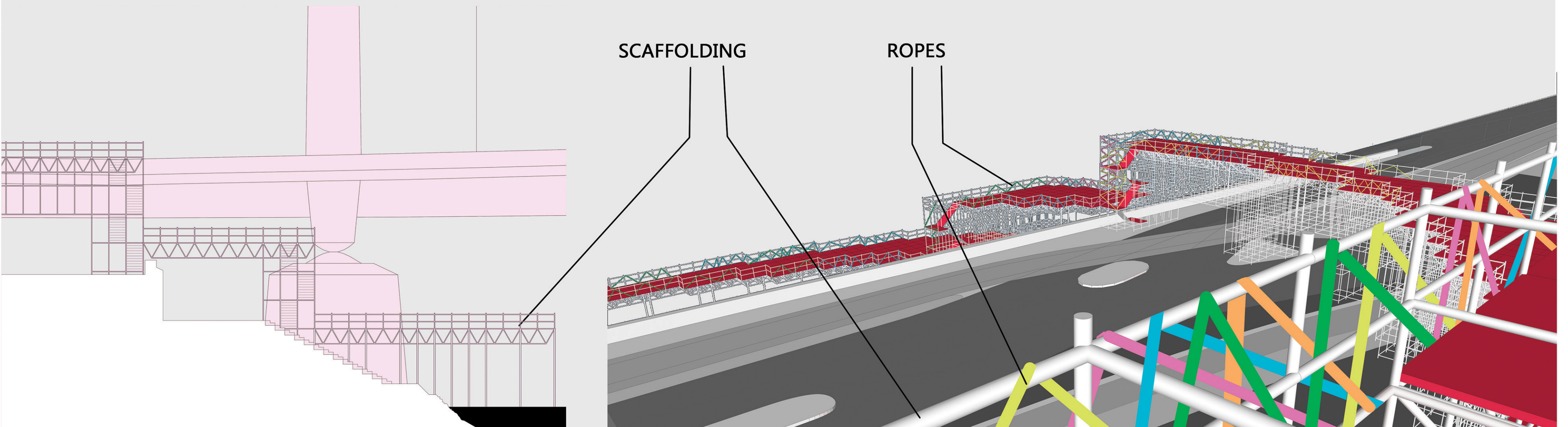
4. COLOUR



FINAL SOLUTION: A RING AROUND THE BRIDGE

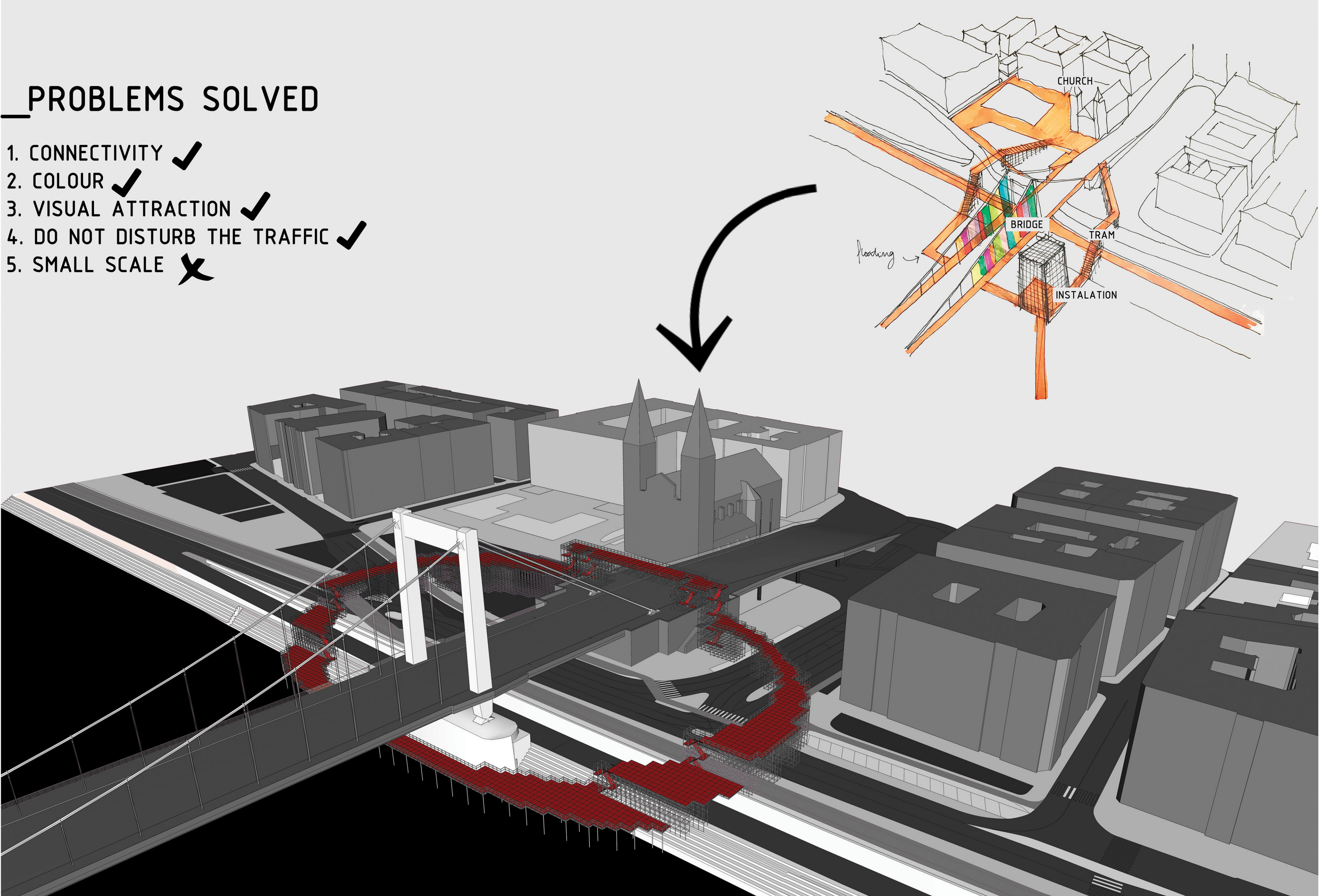


HOW?: SCAFFOLDING AND ROPES

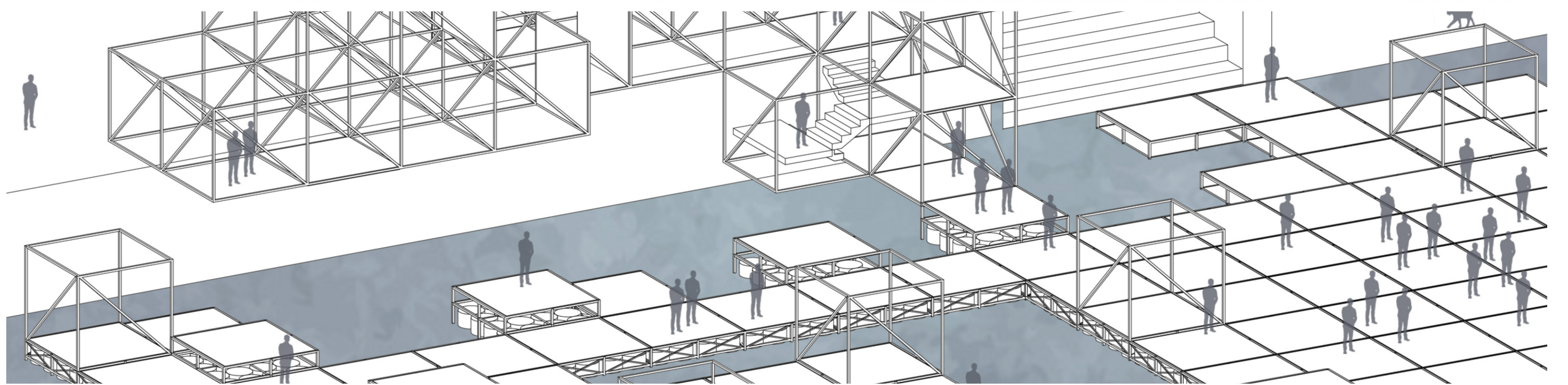
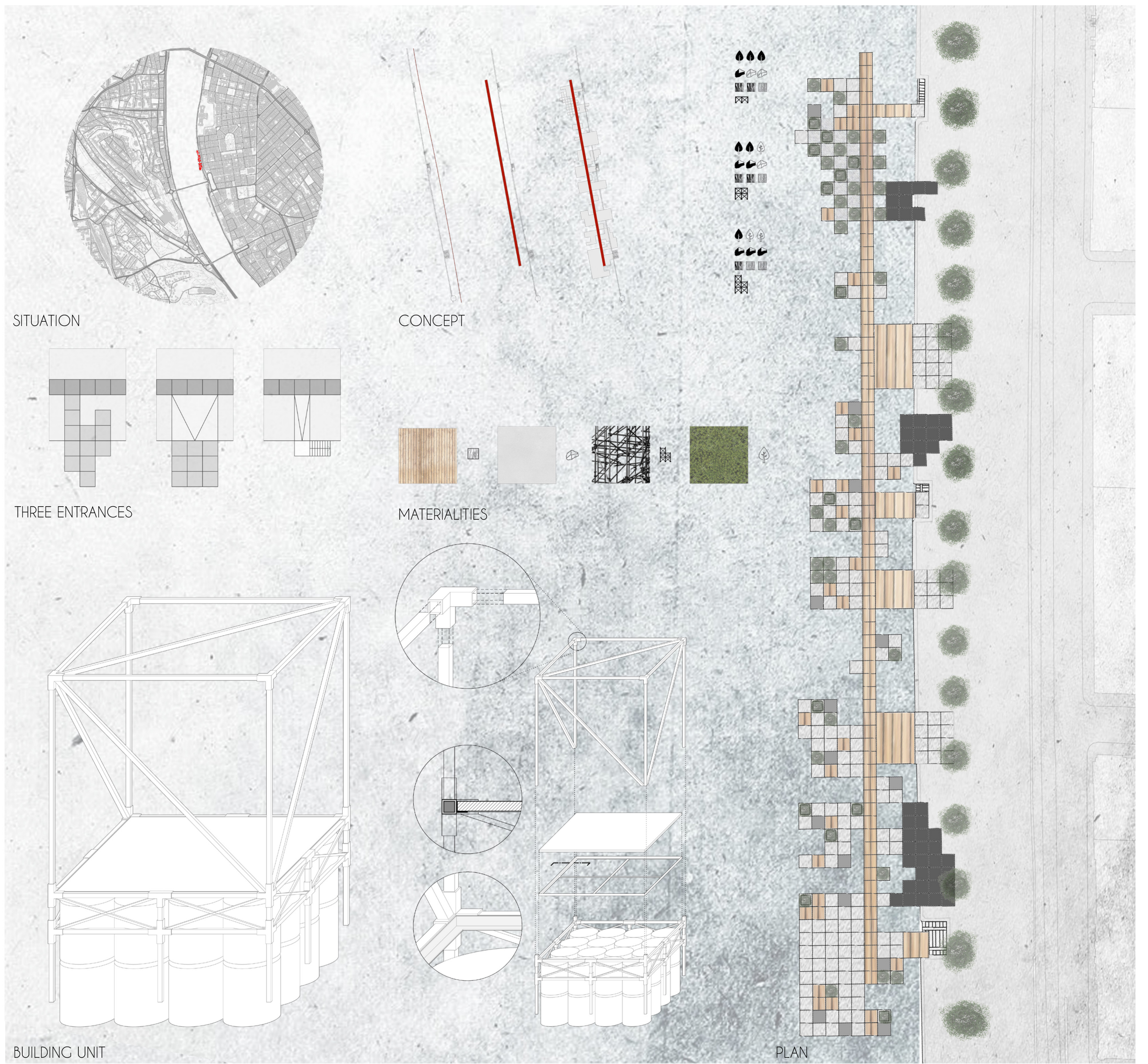


PROBLEMS SOLVED

1. CONNECTIVITY ✓
2. COLOUR ✓
3. VISUAL ATTRACTION ✓
4. DO NOT DISTURB THE TRAFFIC ✓
5. SMALL SCALE ✗



URBAN FRAMES - Spatial Experiments in Budapest



THE SPINE OF SOUND

Lucie Baron | Inés Beirante | Beatriz Lamy | Kristýna Rajdlová

INTERDISCIPLINARY PROJECT BASED STUDIO 2017

Department of Urban Planning and Design

Department of Mechanics, Materials and Structures

URBAN FRAMES - Spatial Experiments in Budapest

FAN ZONE IN BUDAPEST

CLARA GUILBERT / LORENZO LANNIZZOTTO / ANA GONZÁLEZ / ÁLVARO CAMPOS

SITE



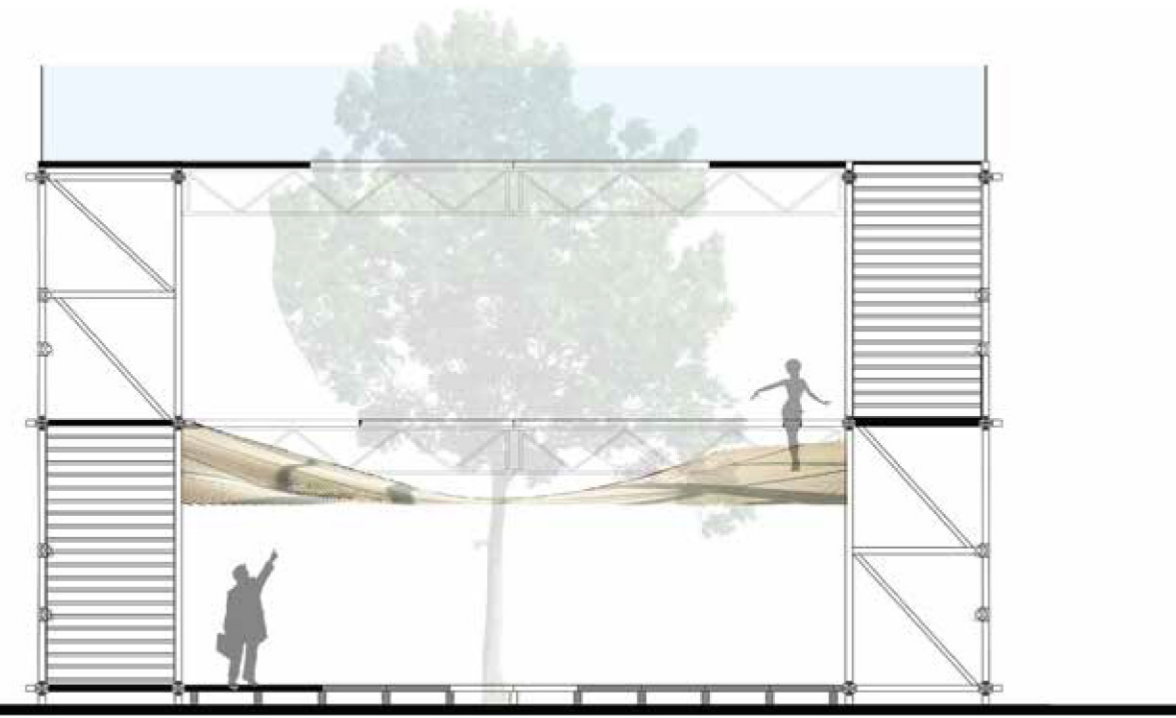
SITE PLAN



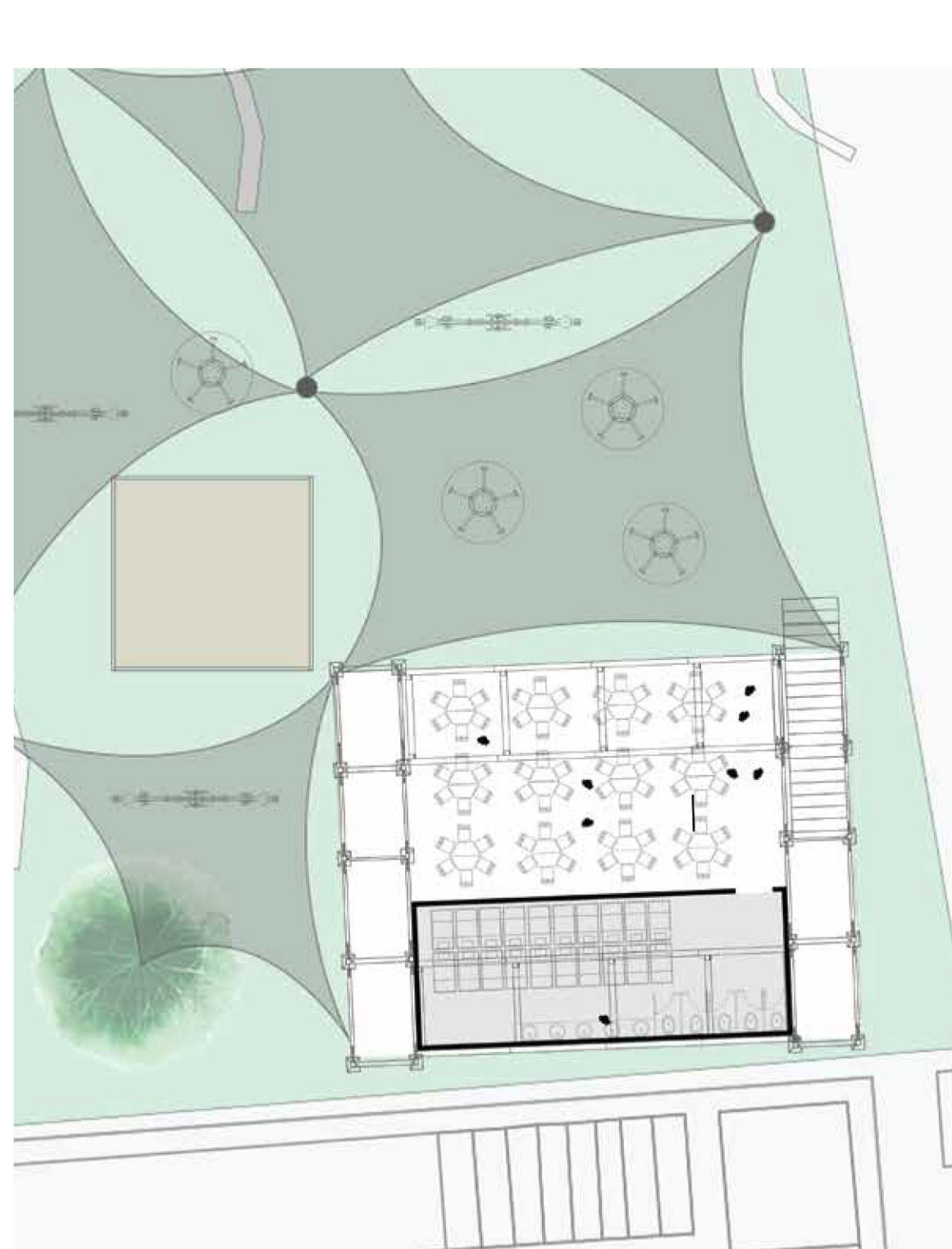
PROGRAM



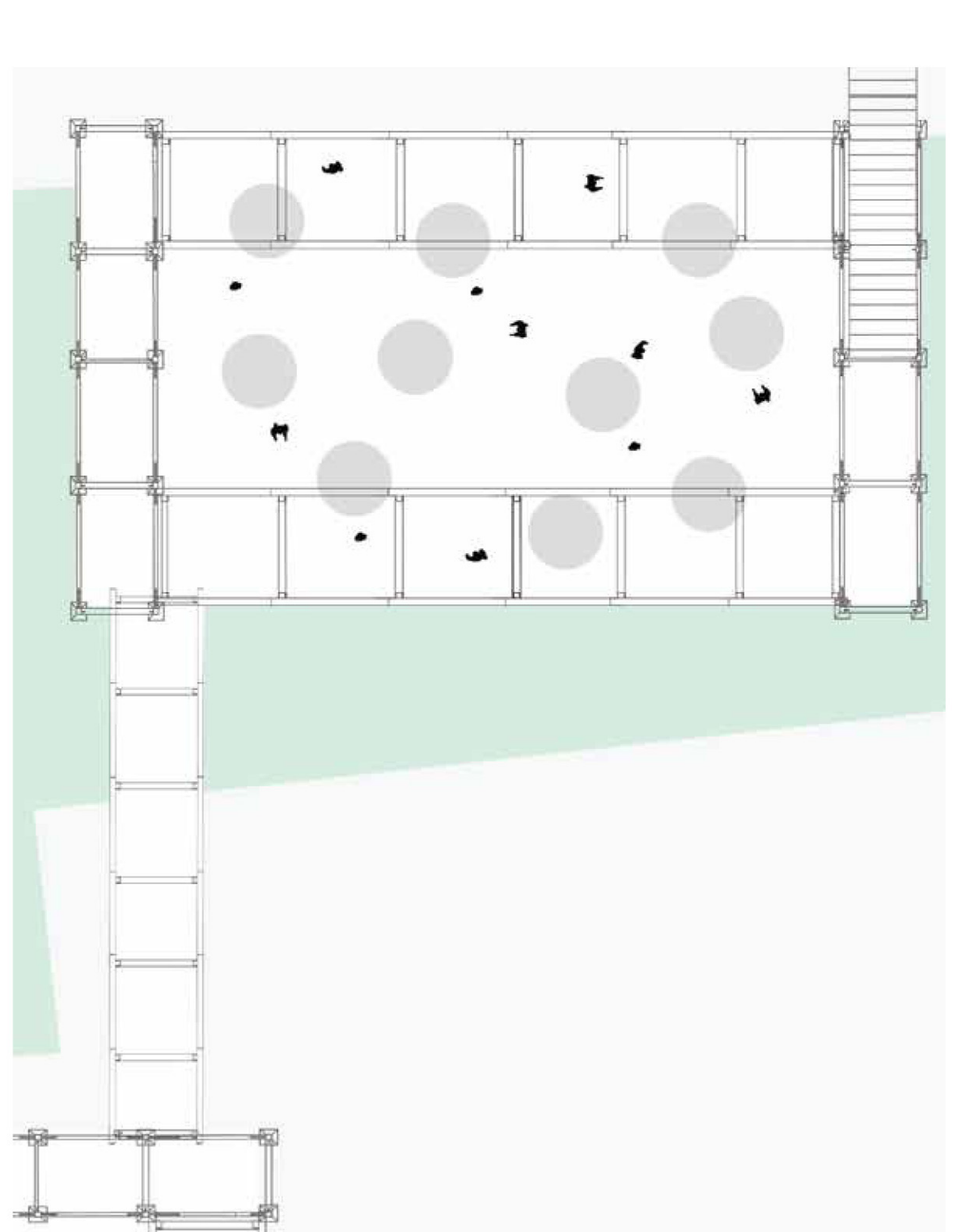
TREE PAVILION_SECTION



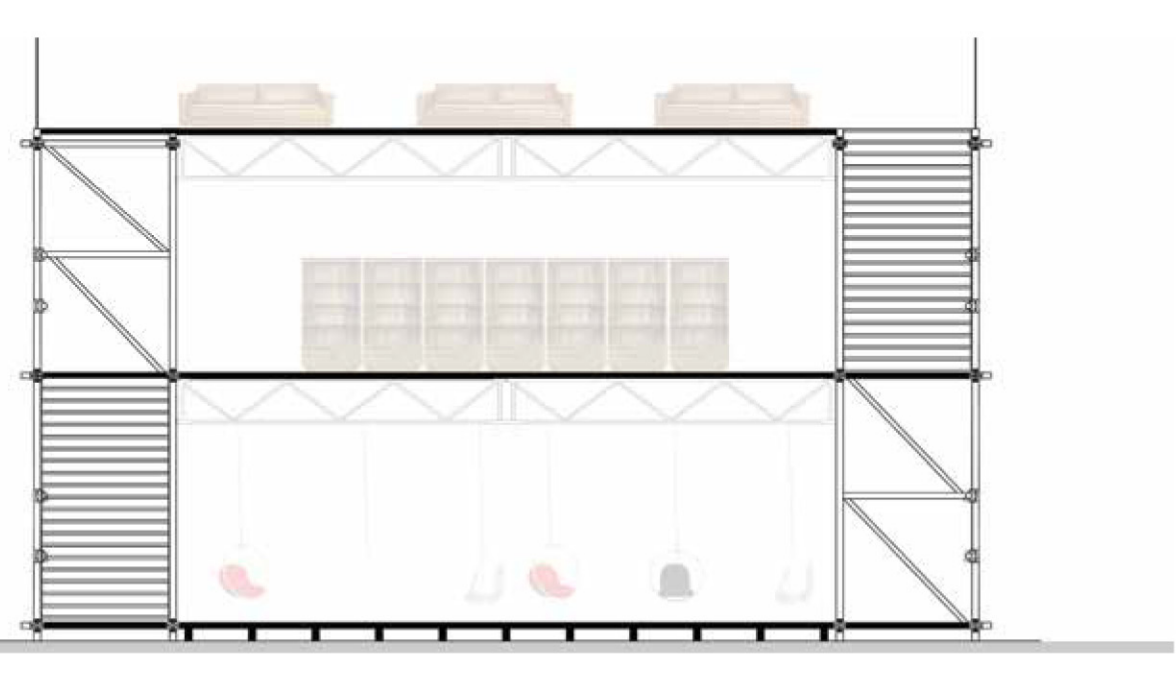
KINDERGARDEN PAVILION_PLAN



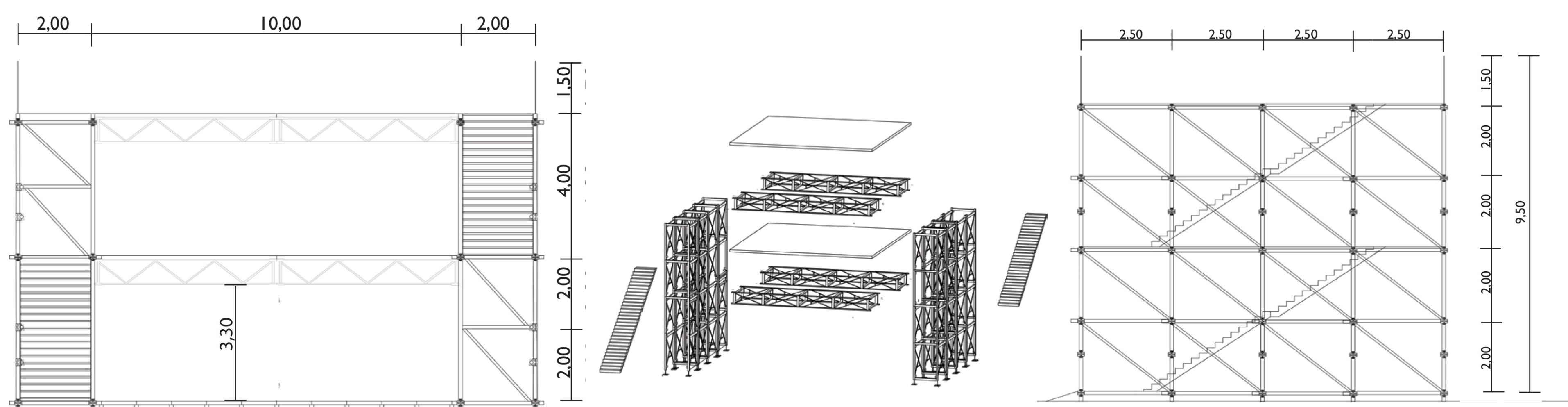
RESTAURANT PAVILION_PLAN



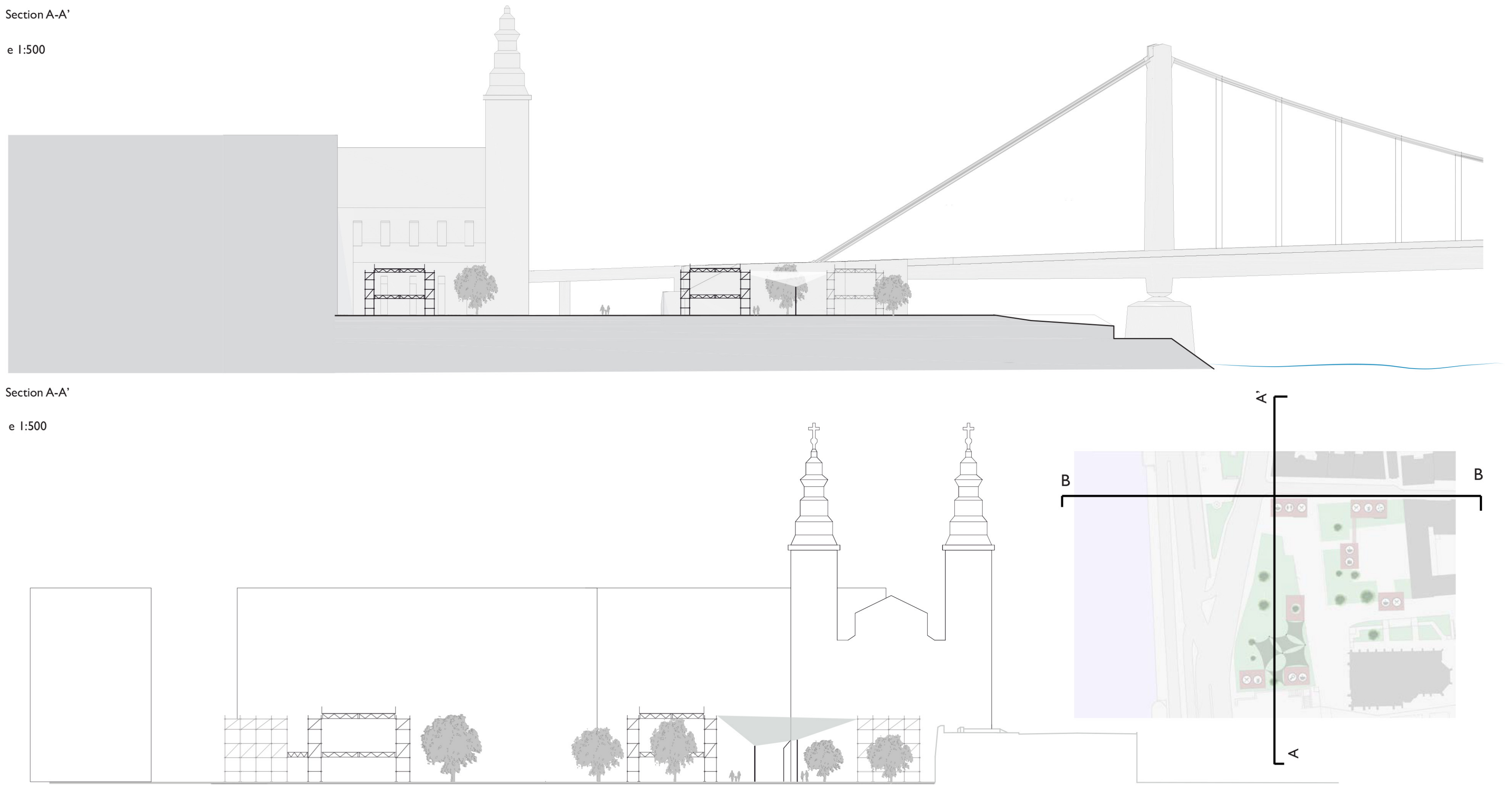
MUSIC PAVILION_SECTION



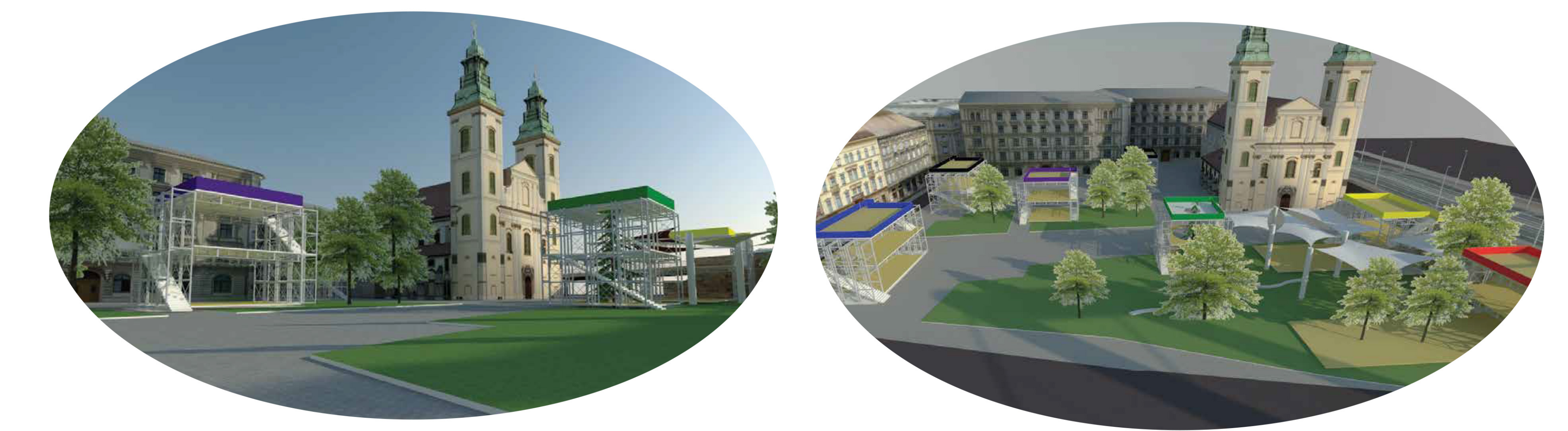
STRUCTURE



SITE SECTIONS



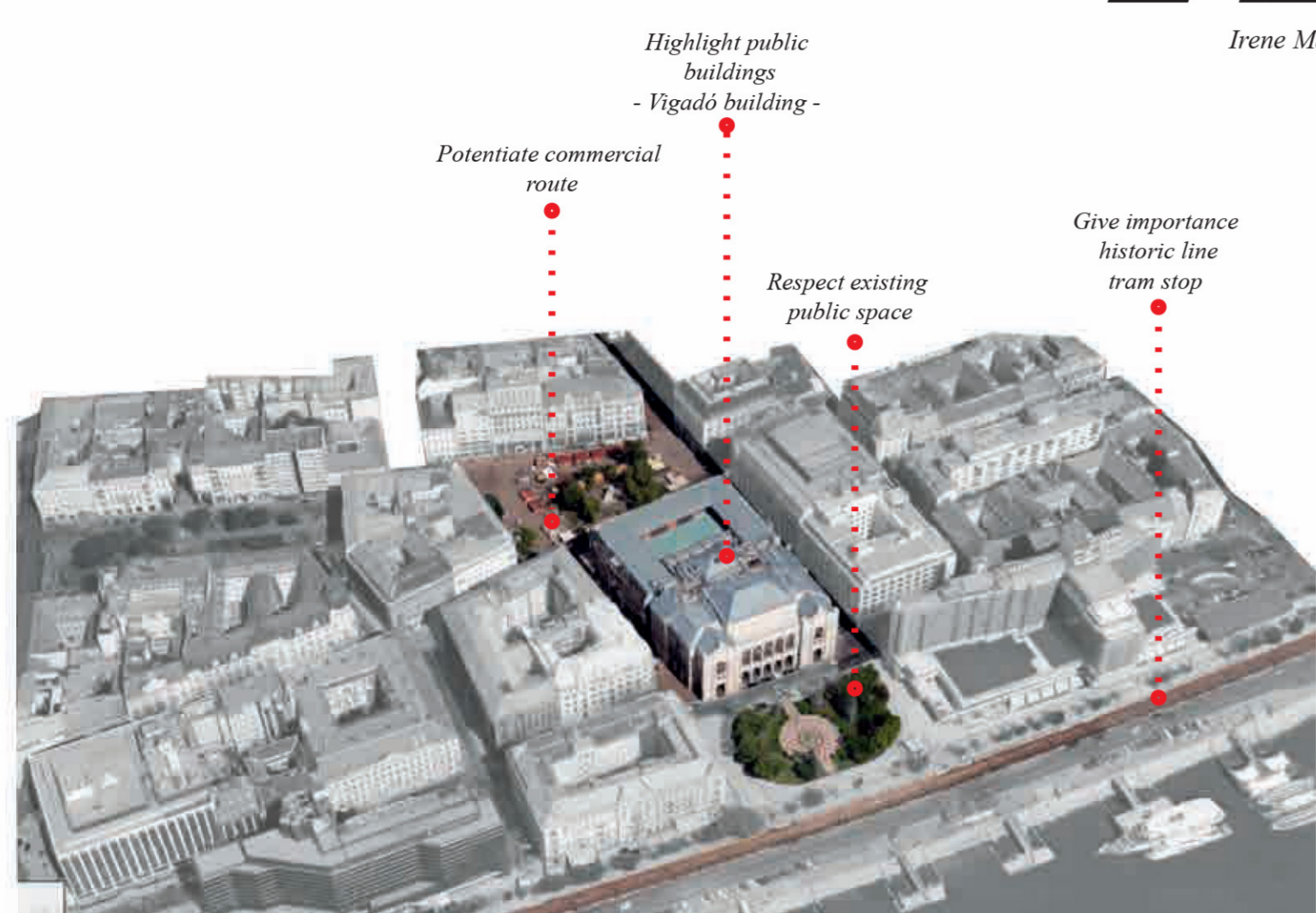
VIEWS



URBAN FRAMES - Spatial Experiments in Budapest

LET'S POP

Irene Martinez · Pauline Leclabart · Alexis Barberat · Reyes Liebana



Structure design

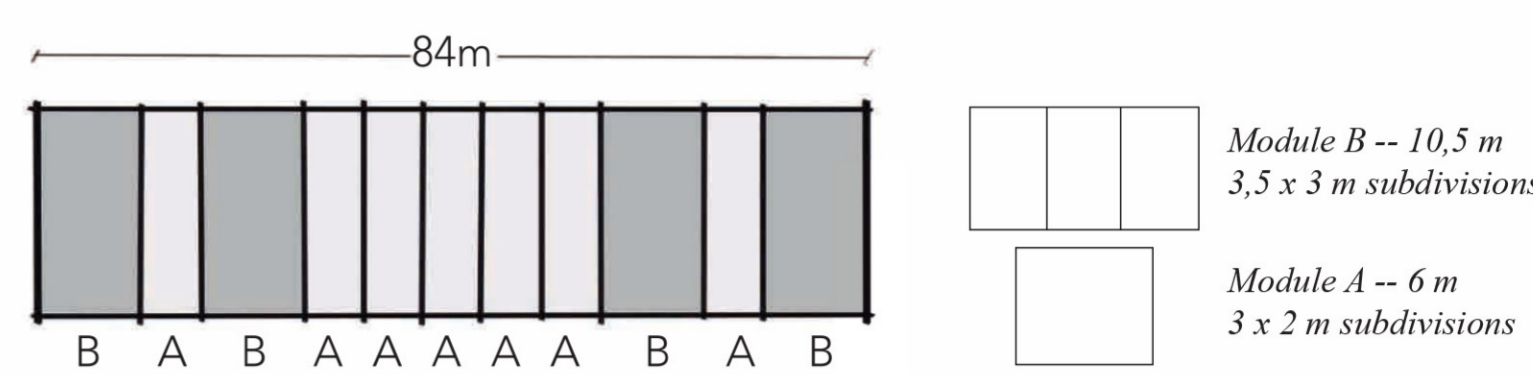
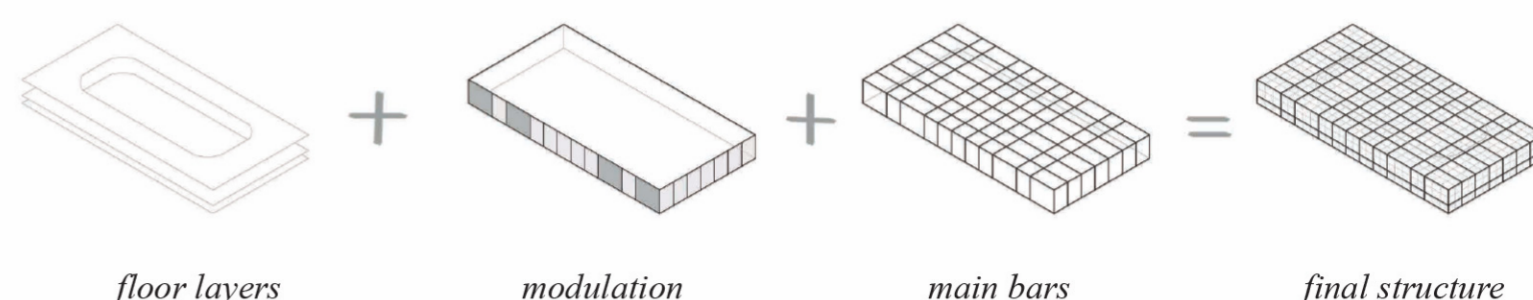
The structure is projected according to rhythm of the facade of the adjacent building, VIGADO CONCERT HALL.

B.A.B.A.A.A.A.B.A.B.

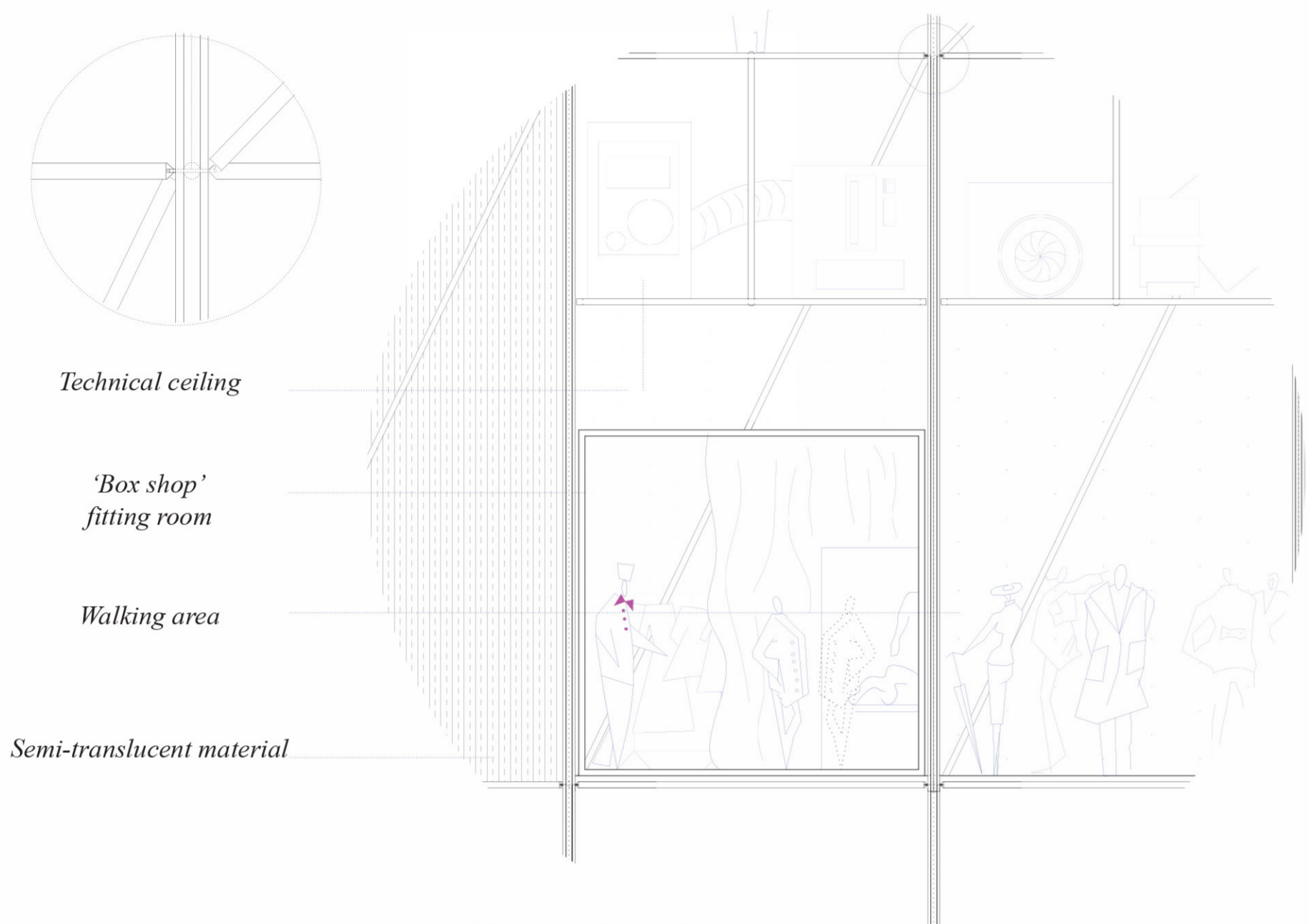
long sides 84m

A.A.A.A.A.A.A.

short sides 54m



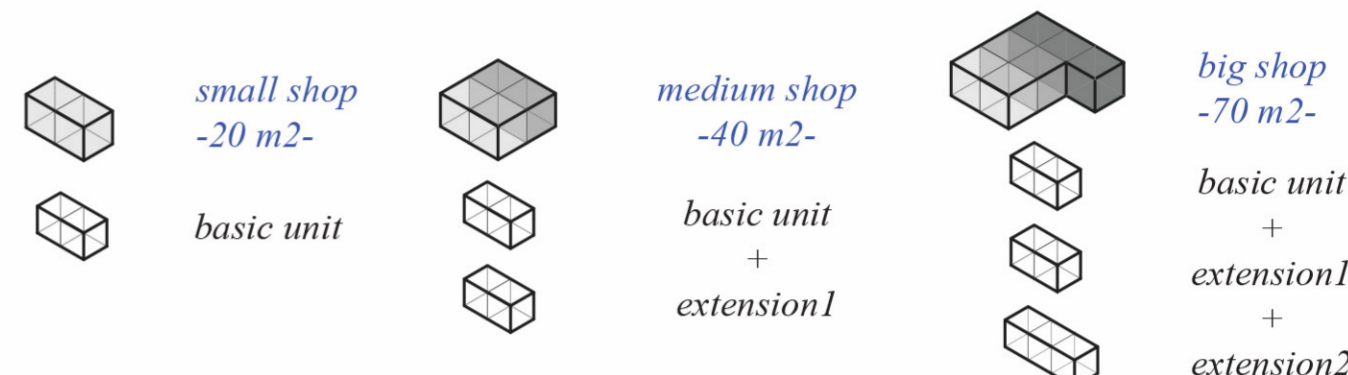
Details



Store typologies

Different typologies of stores depending on the conformation of the floor plan.

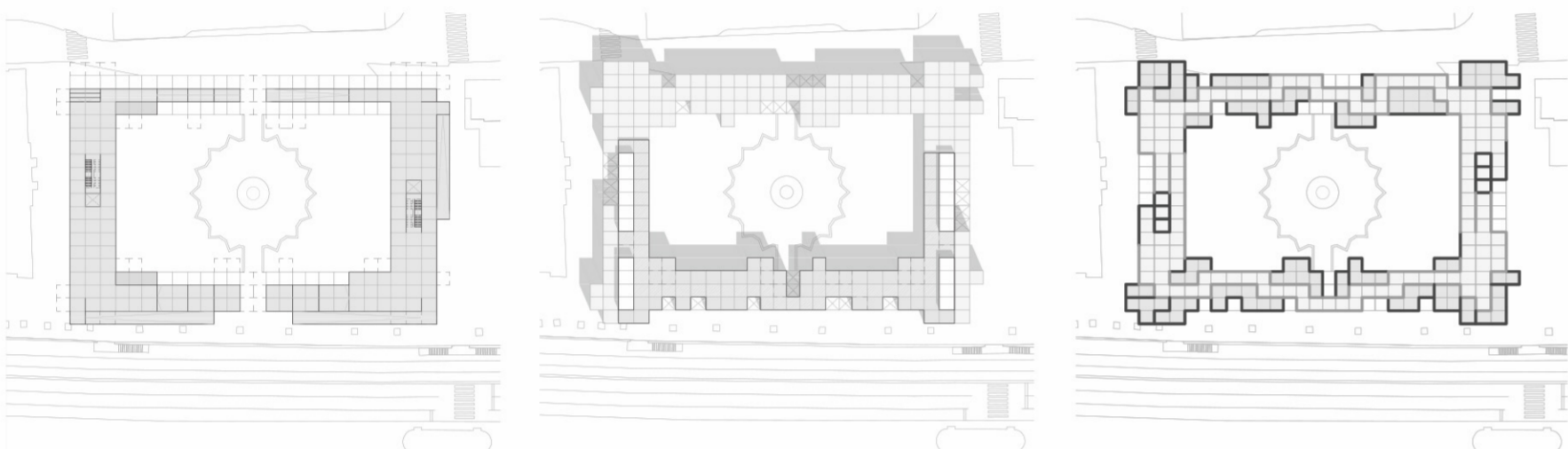
Satisfy all kind of business and offer unique and personal spaces.



Views



Floor plan diagrams



groundfloor level

rooftop level

walls opacity

accesses on the corners

free floor - connexion with public space -

1m up to avoid the fence of the square

chill and recreative area

direct view to the danube

catwalk - fashion shows - 2 rooftop bars

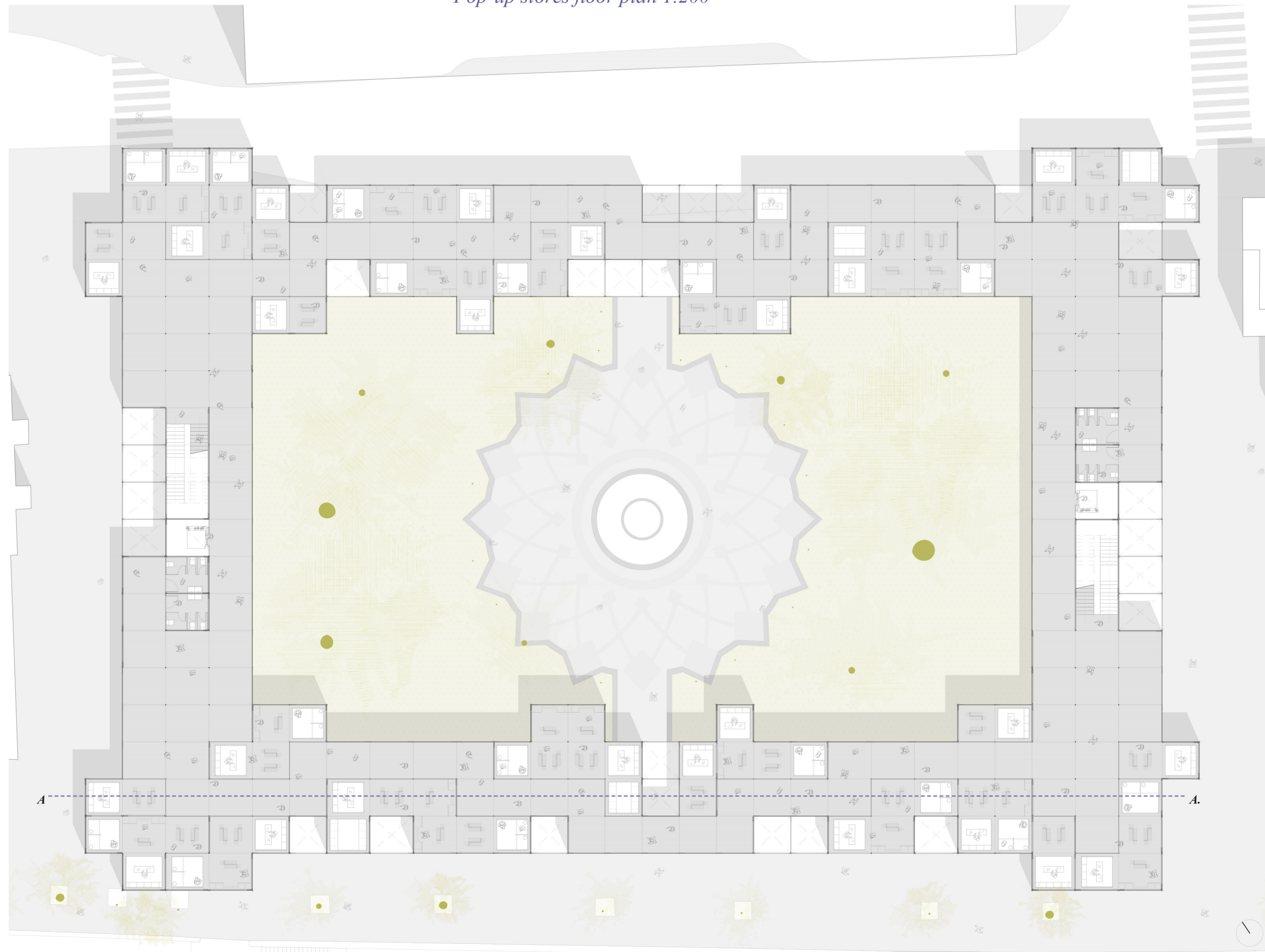
we play with transparencies to create a composition with the scaffolding and the textiles (canvas)

different treatment of pop-up store spaces and traffic areas on the facades

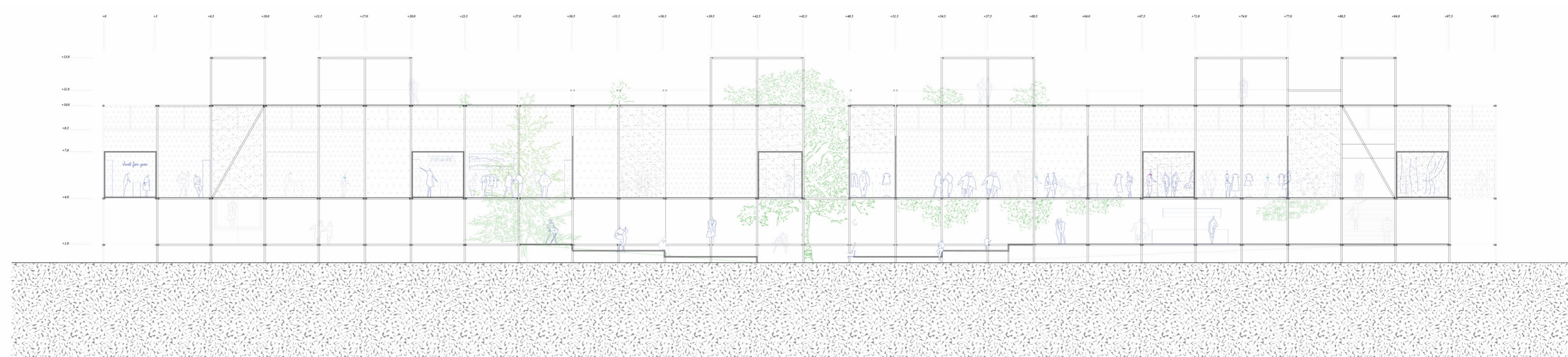
interior distribution



Pop-up stores floor plan 1.200



Section AA. 1.200

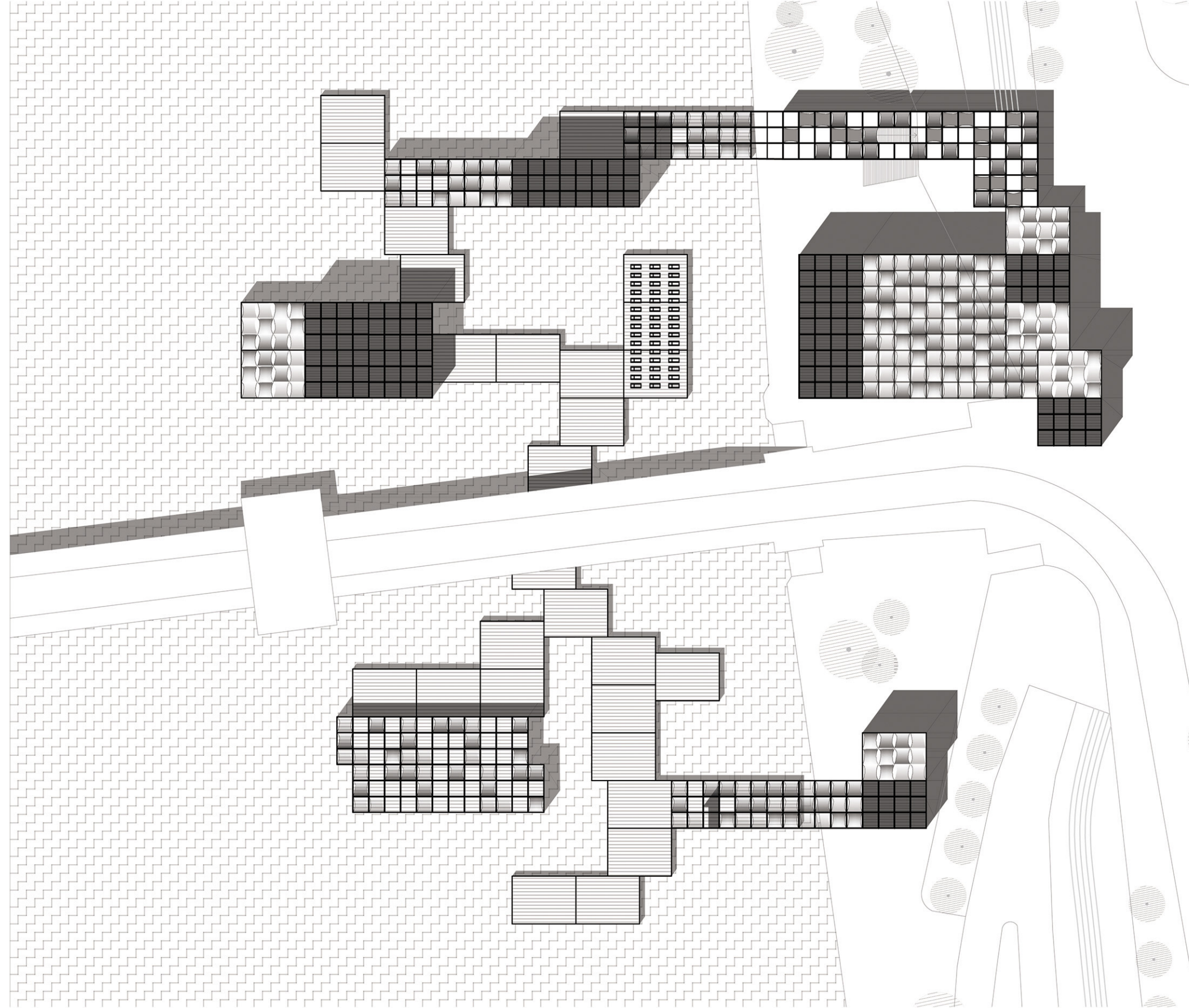


URBAN FRAMES - Spatial Experiments in Budapest

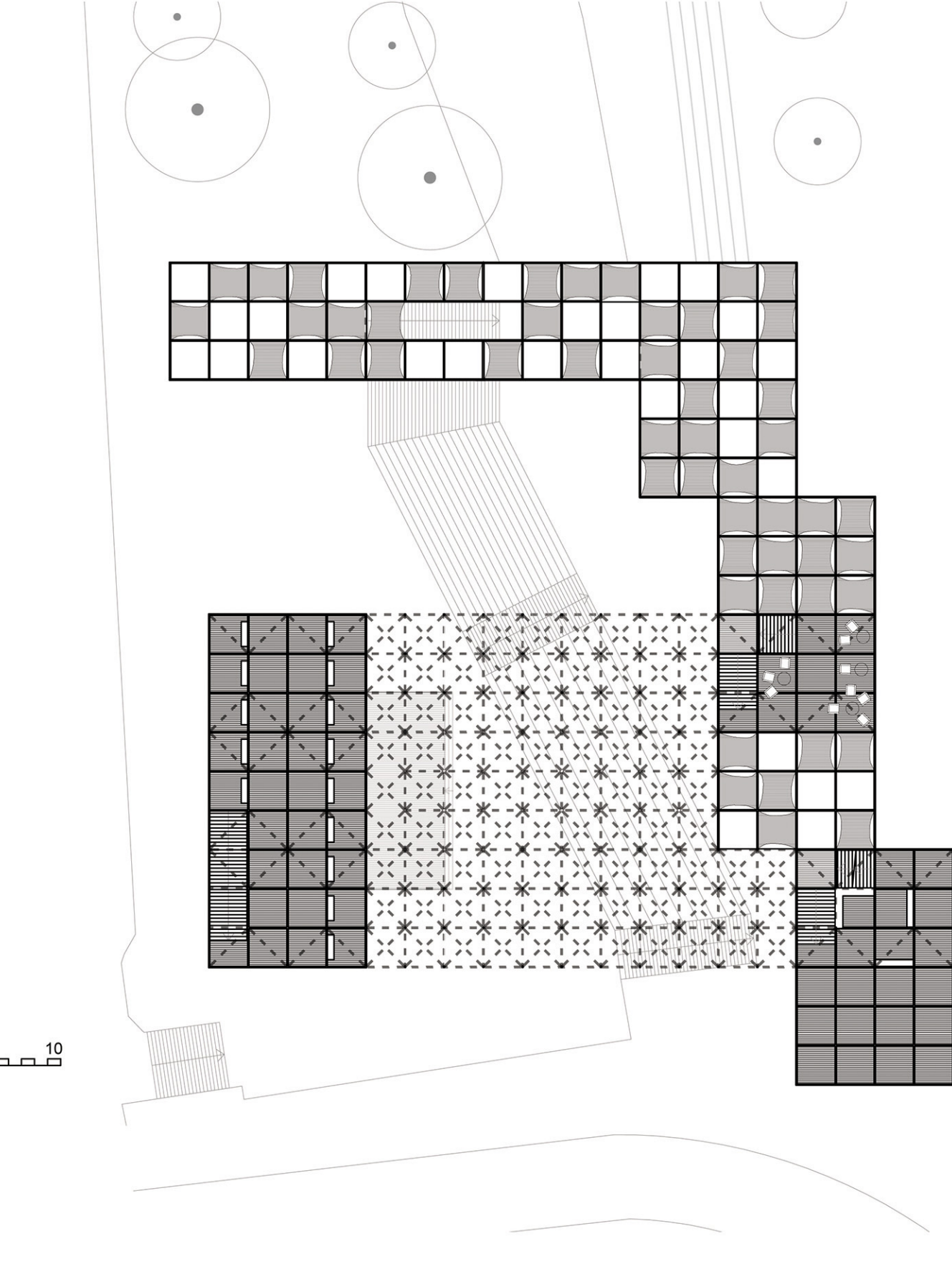
A NEW PUBLIC SPACE FOR STREET ARTISTS

AIXALA ARNAU - GORNES PILAR - NOLENT LEA - STEFANOVIC VIOLETA

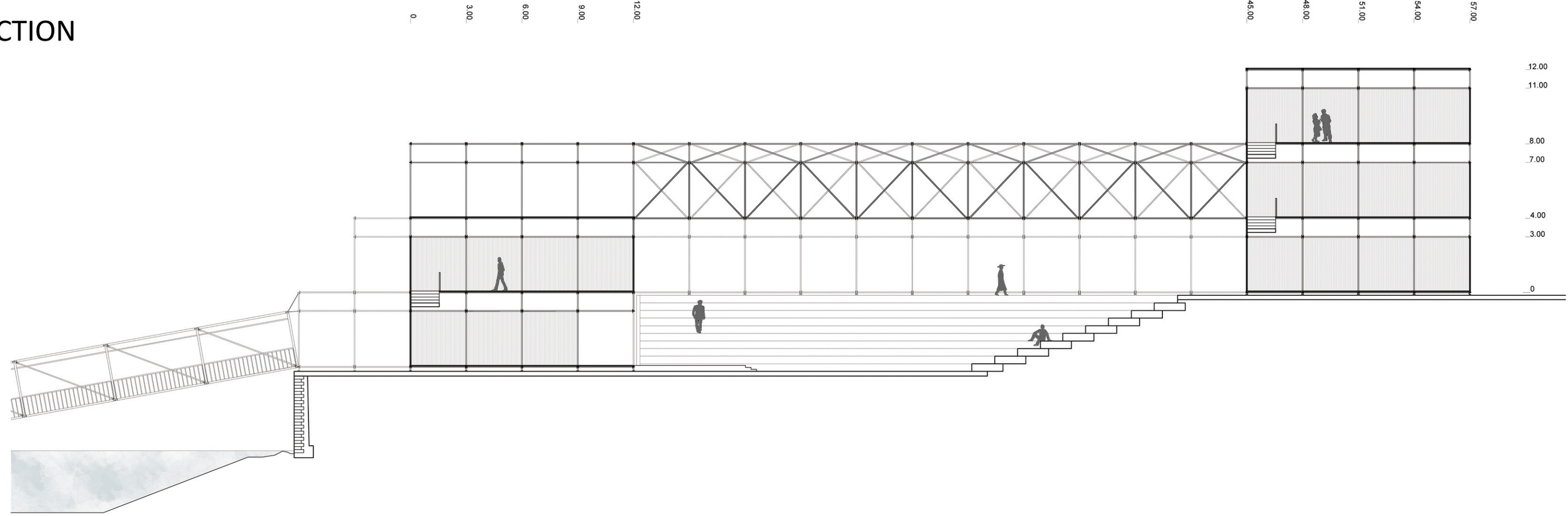
MASS PLAN



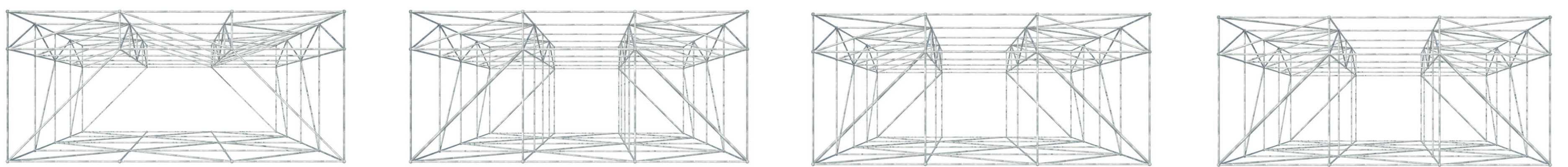
THE STAGE



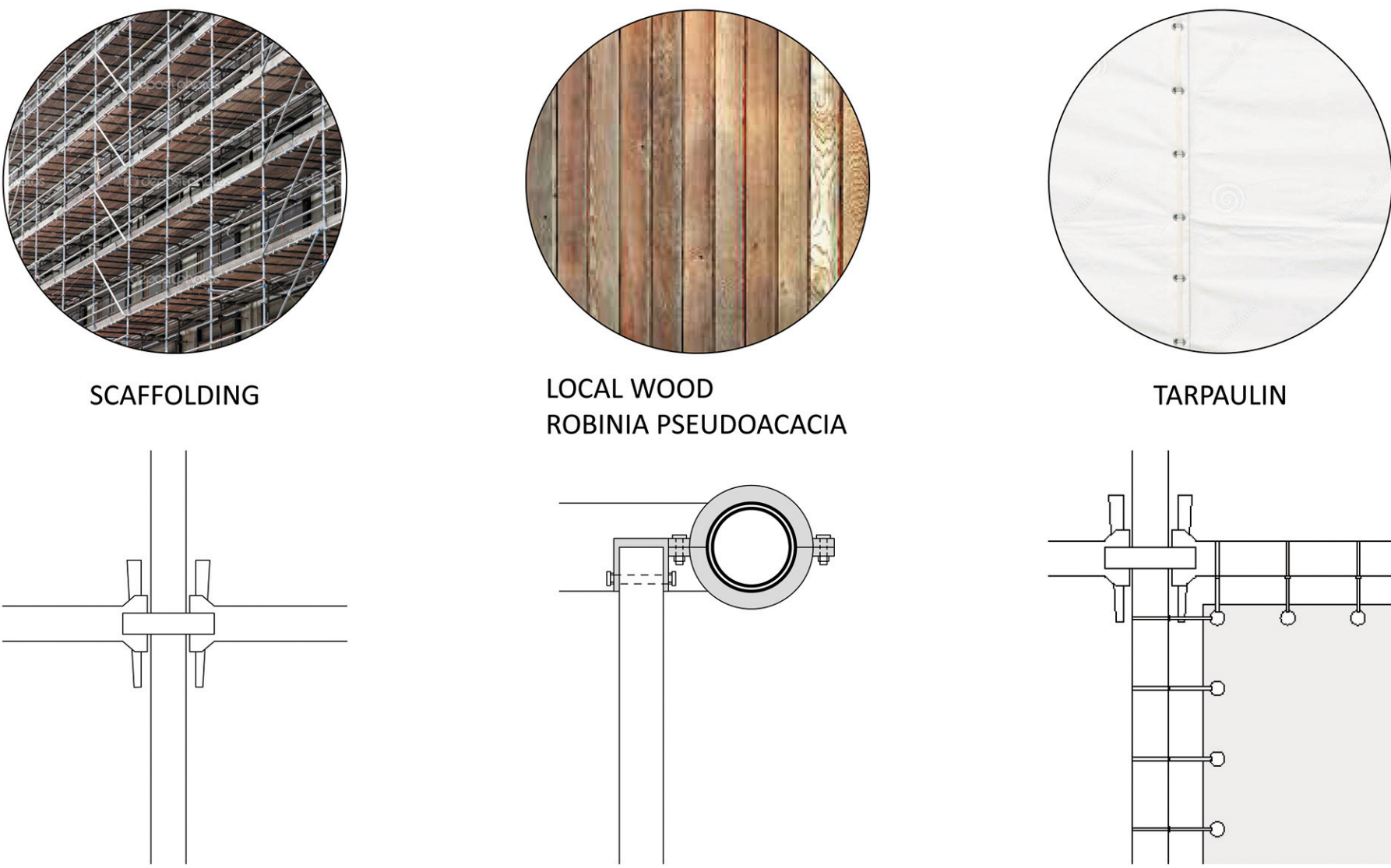
STAGE SECTION



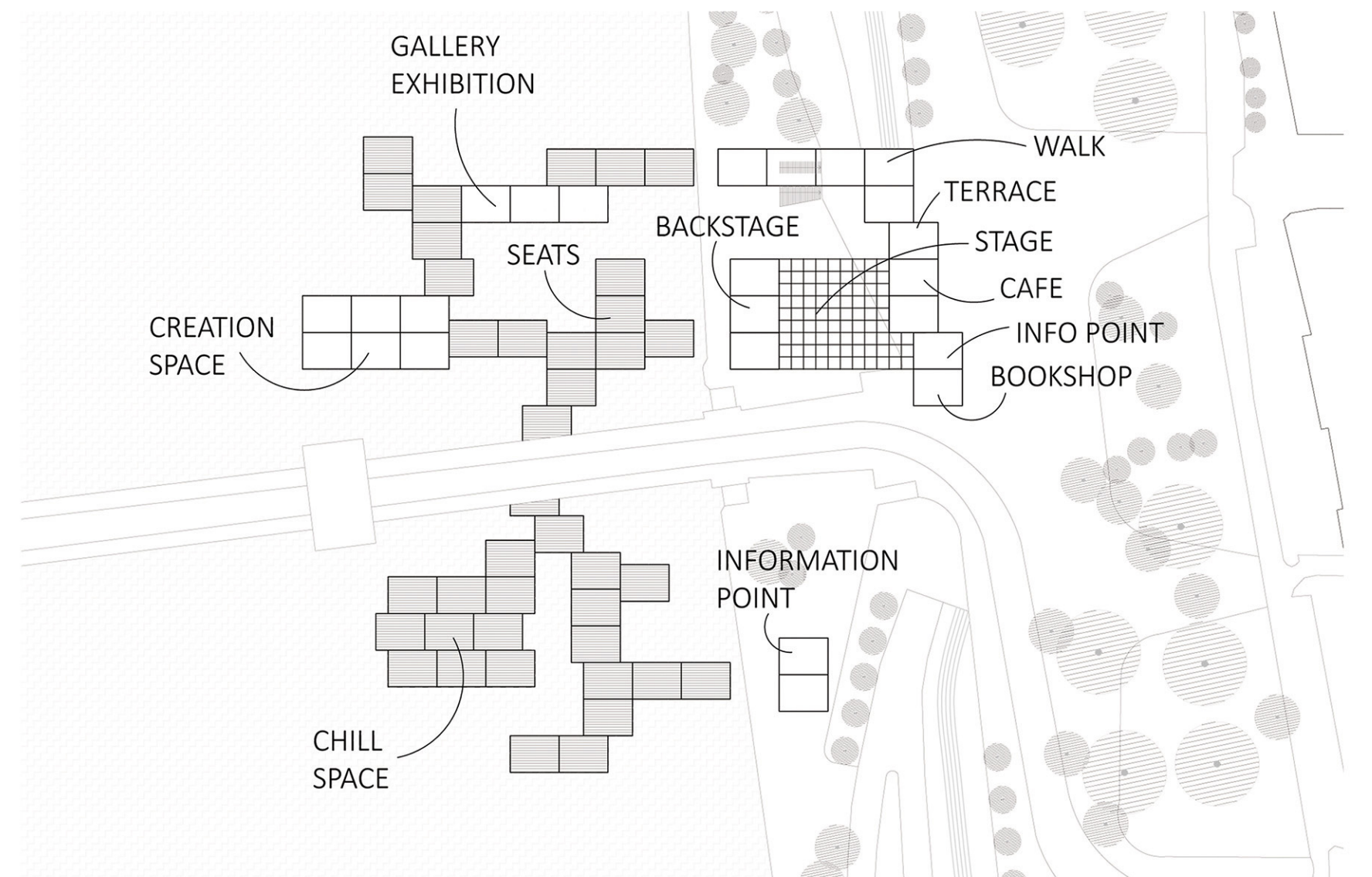
MODULE VARIATIONS



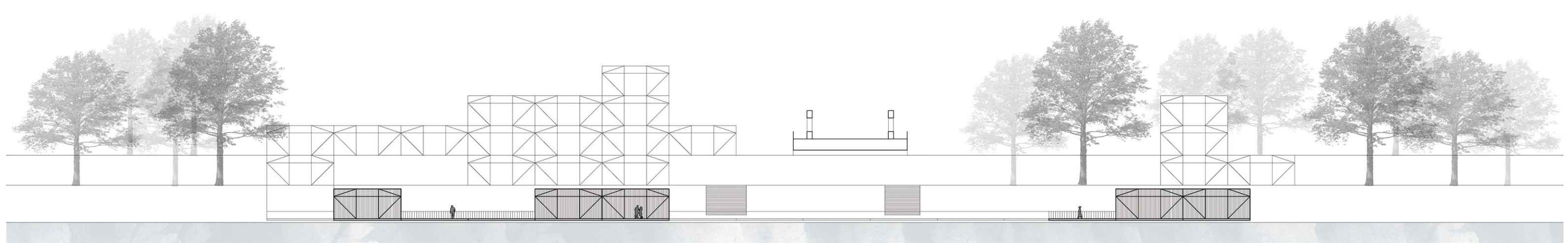
MATERIALITY



PROGRAM



PLATFORM SECTION/RIVERSIDE ELEVATION



FLEXIBLE BRIDGE SECTION

