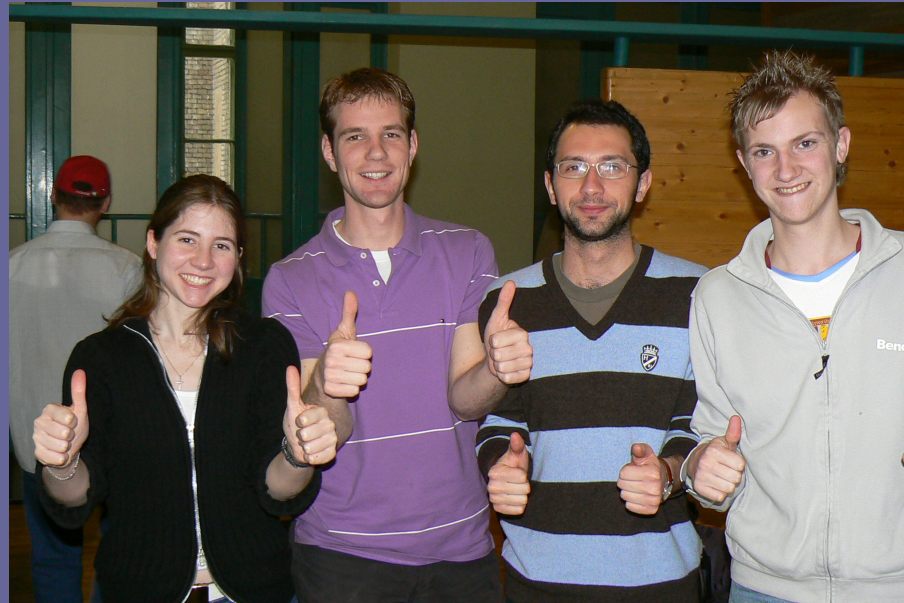


# “Touch the Water” Budapest 2007



By Group 6

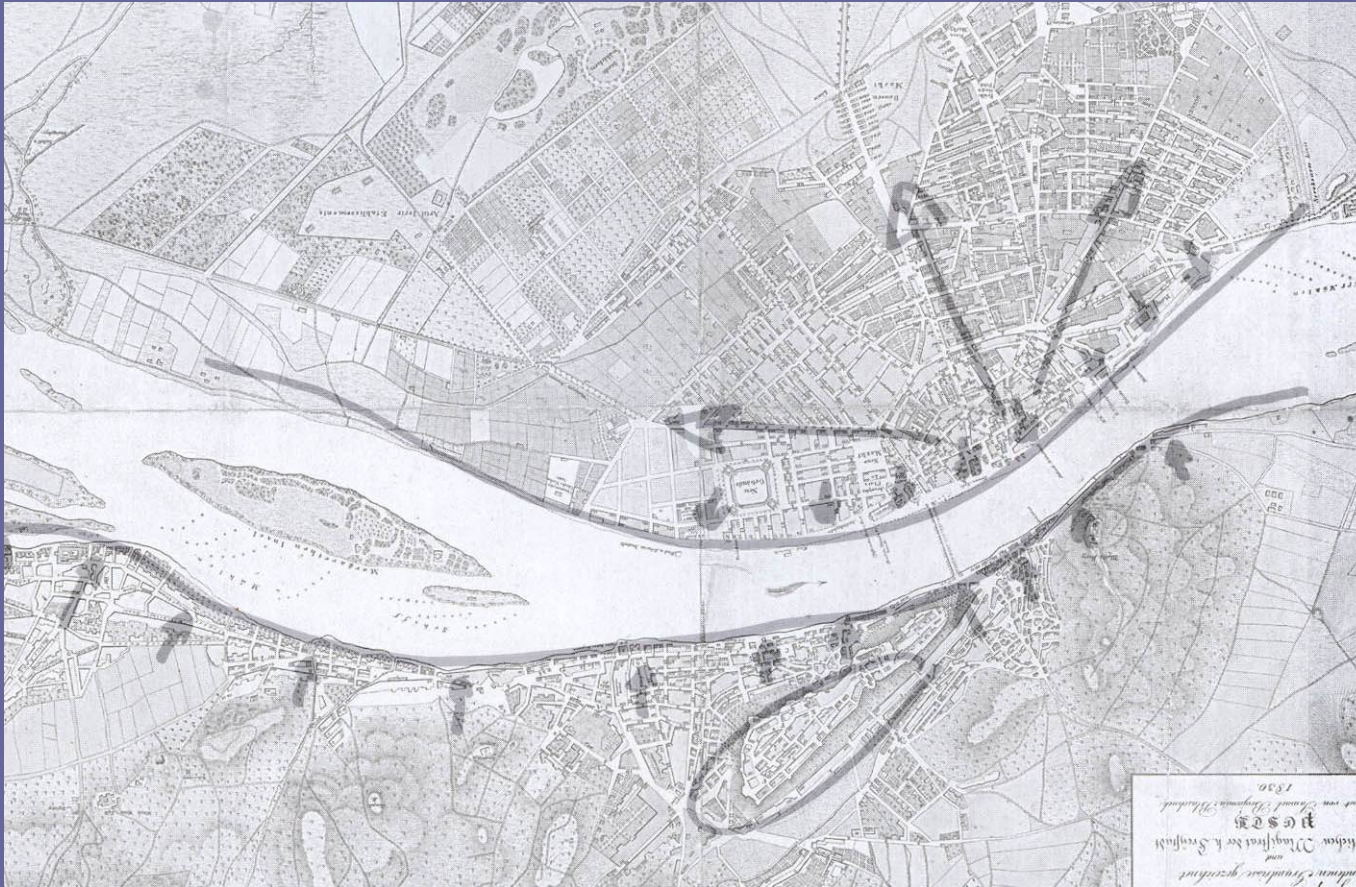
Piebe de Jong  
Craig Allsop  
Isabelle Berthe  
Andrea Colantonio

(BA built environment)  
(BA Hons. Geography)  
(Civil engineering)  
(Building engineering – Architecture)

# Presentation contents

- Problem
- Vision
- Analysis
- Solutions
- Conclusion

# The problems



- The city is separated from the river
- Budapest is a big city, not a cohesive city



# Our project vision

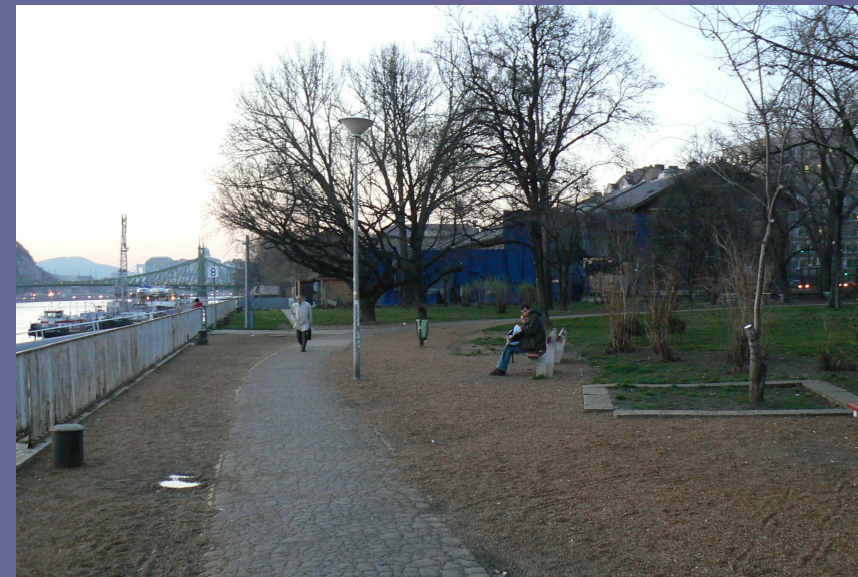


- Bring the city to the river.
- Link the three main cities to each other



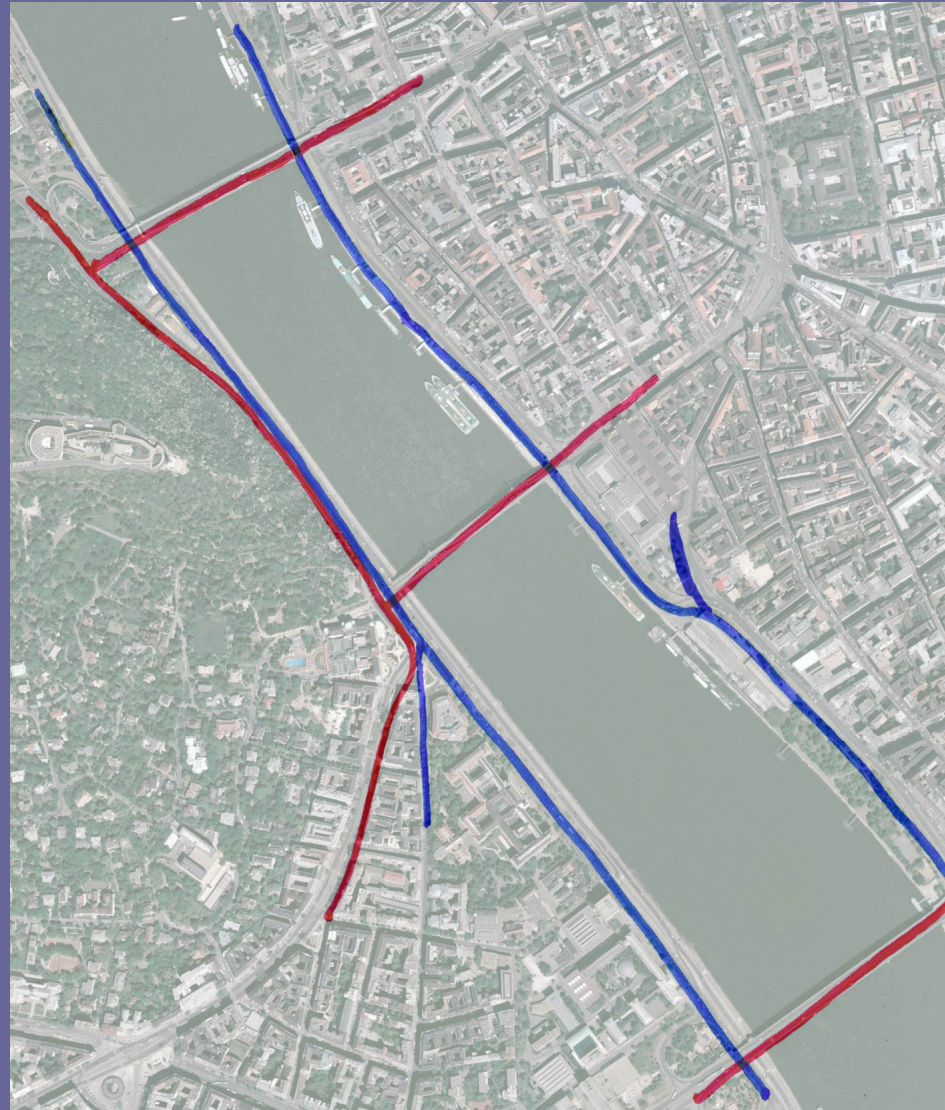
# Analysis of the current situation

- Derelict warehouses.
- Busy roads.
- Not safe for pedestrians.
- No safe green park





# Traffic problem



# Connection problem.





# Functions of the project area

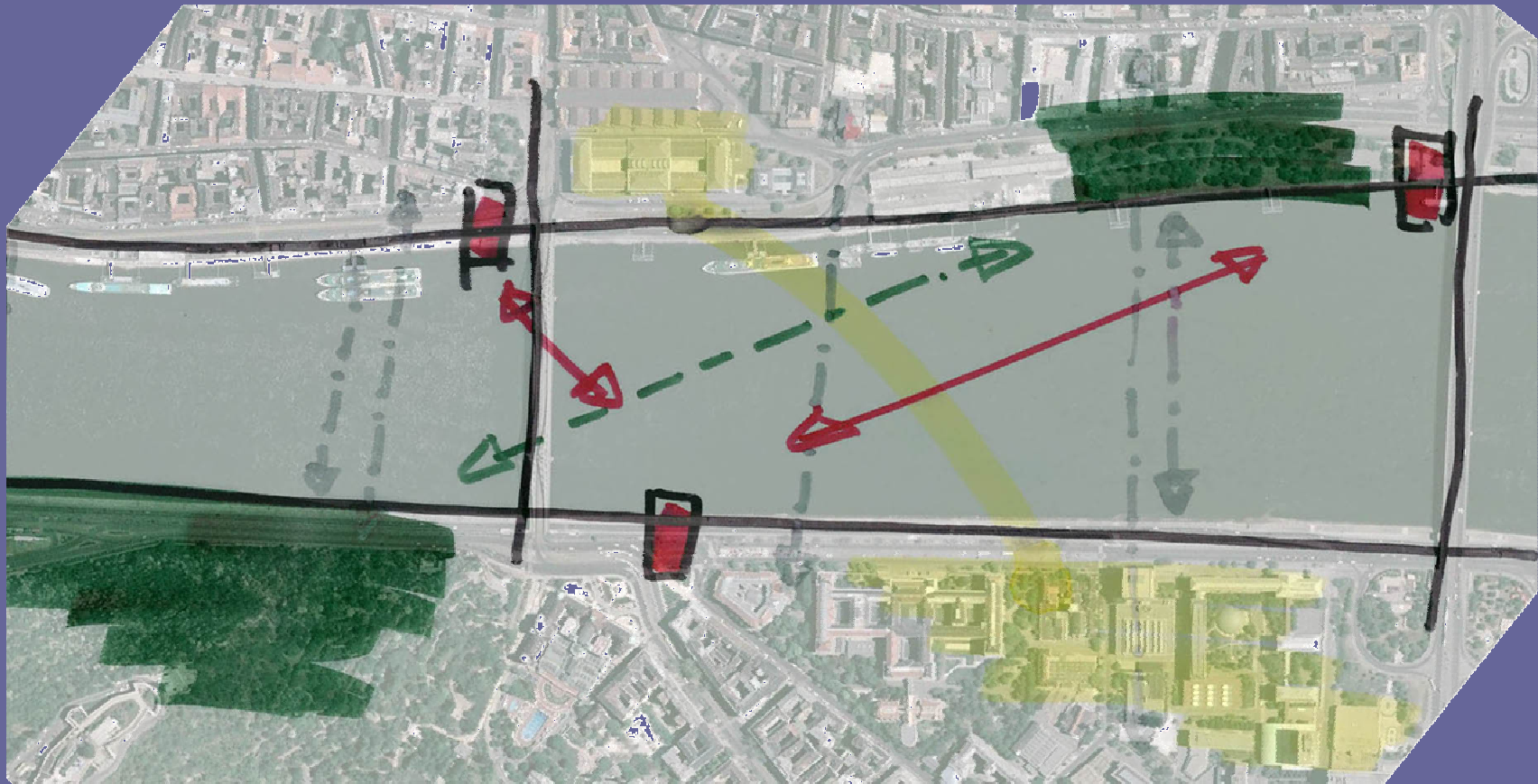


# Comparison with other cities





# Connection plans





# Attraction of the River

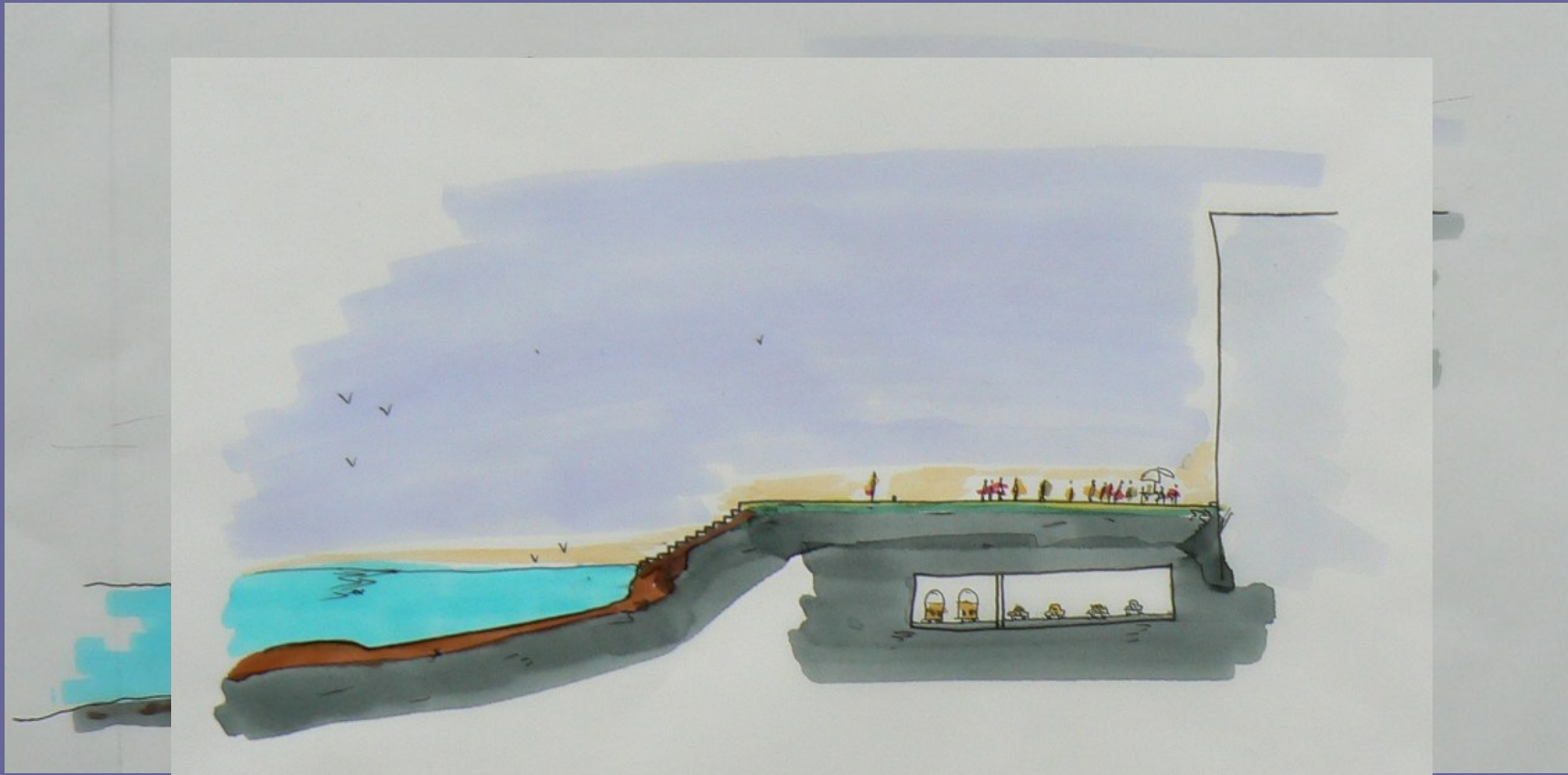


# Key Feature 1: Promenade.



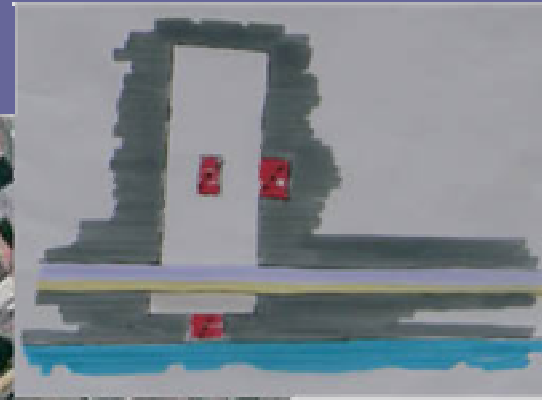
- Pedestrian zone with all transport underground
- Landmark for the important connections
- Tree lined space
- Recreation and leisure facilities

# Transformation of the promenade area





# Resolution for the Liberty Bridge area

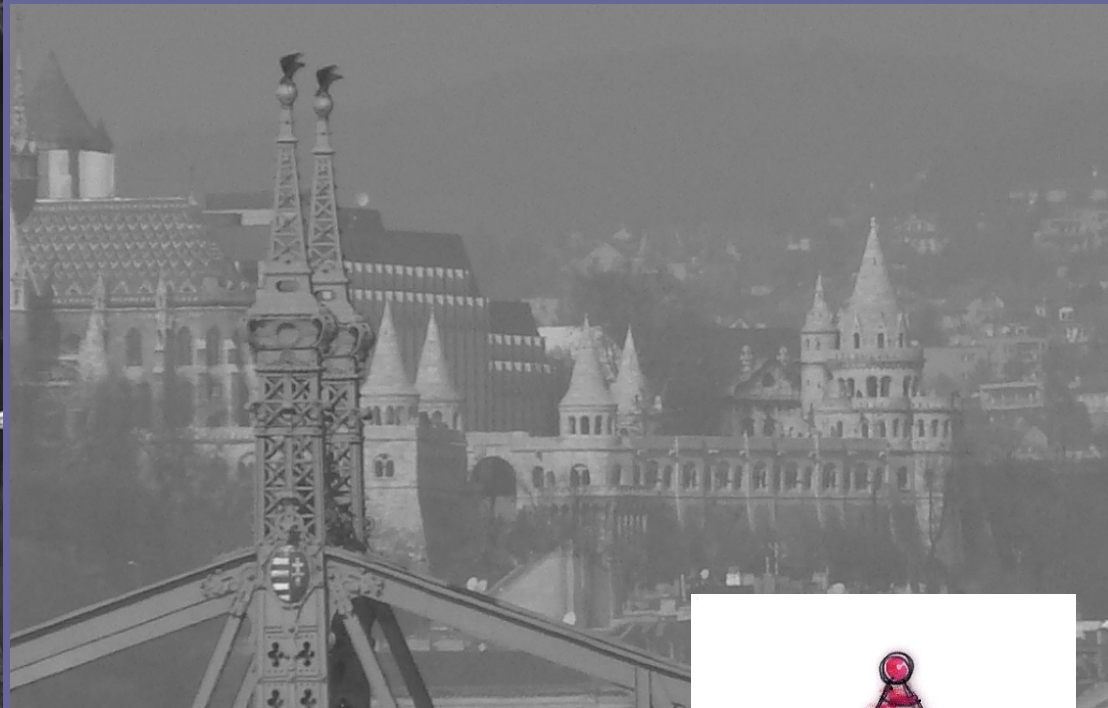
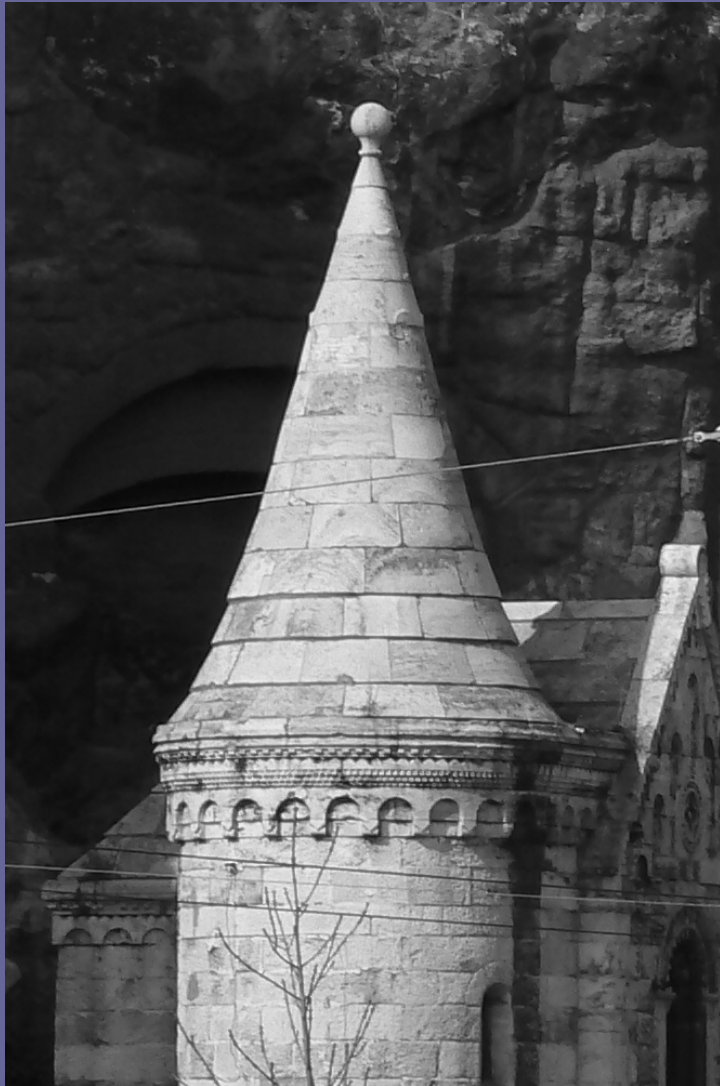


# Liberty Square footbridge

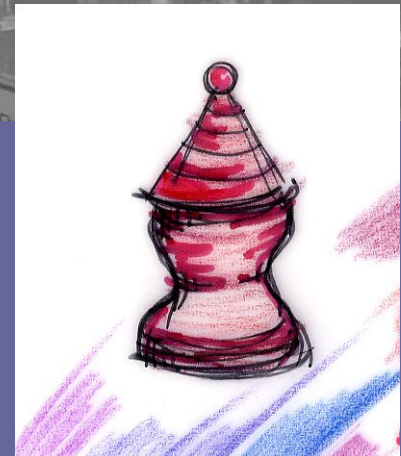


- Footbridge to link the two parts of the square

# Key Feature 2: Elements of Visual Connection

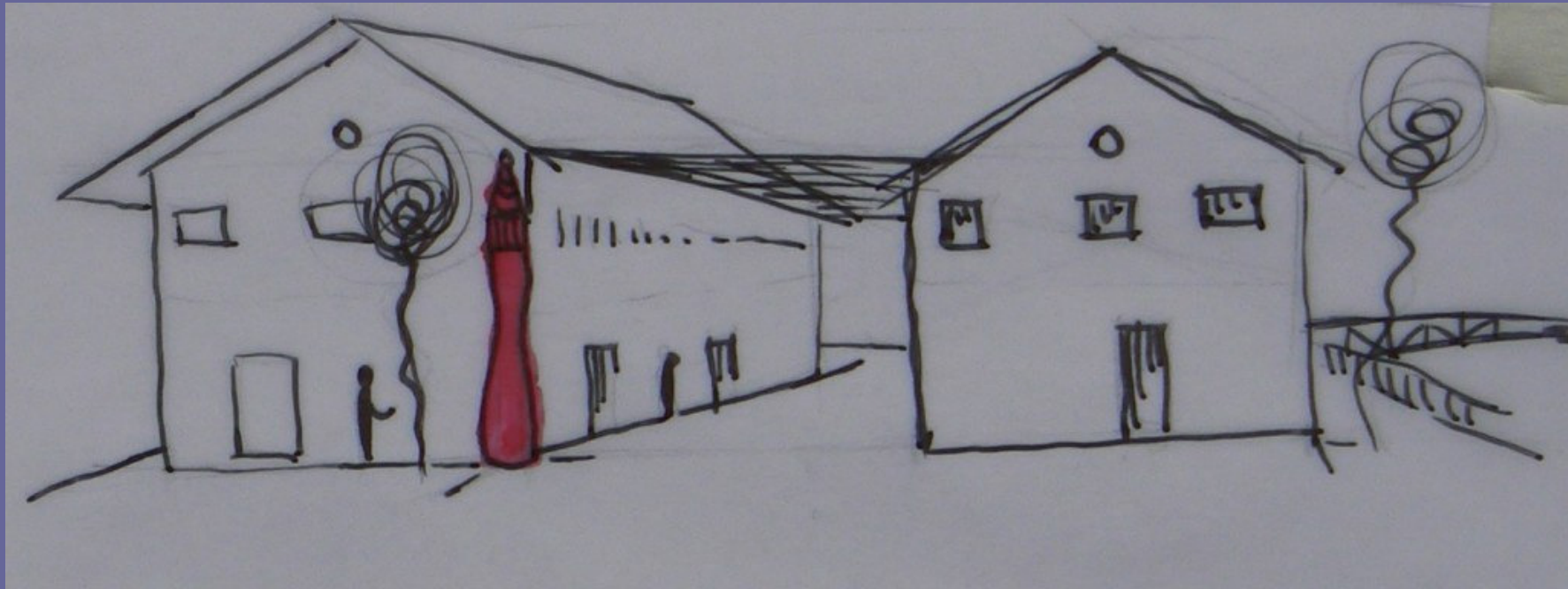


- Redesigned Hungarian shape.





# Elements of Visual Connection



- High visibility
- Points of Reference
- Different colours for different attractions
- Different sizes for importance

# Visual element locations





## Key Feature 3: Urban Park.



- Multifunctional green area with warehouses
- Provides green space in Budapest
- Will connect Budapest to the River Danube

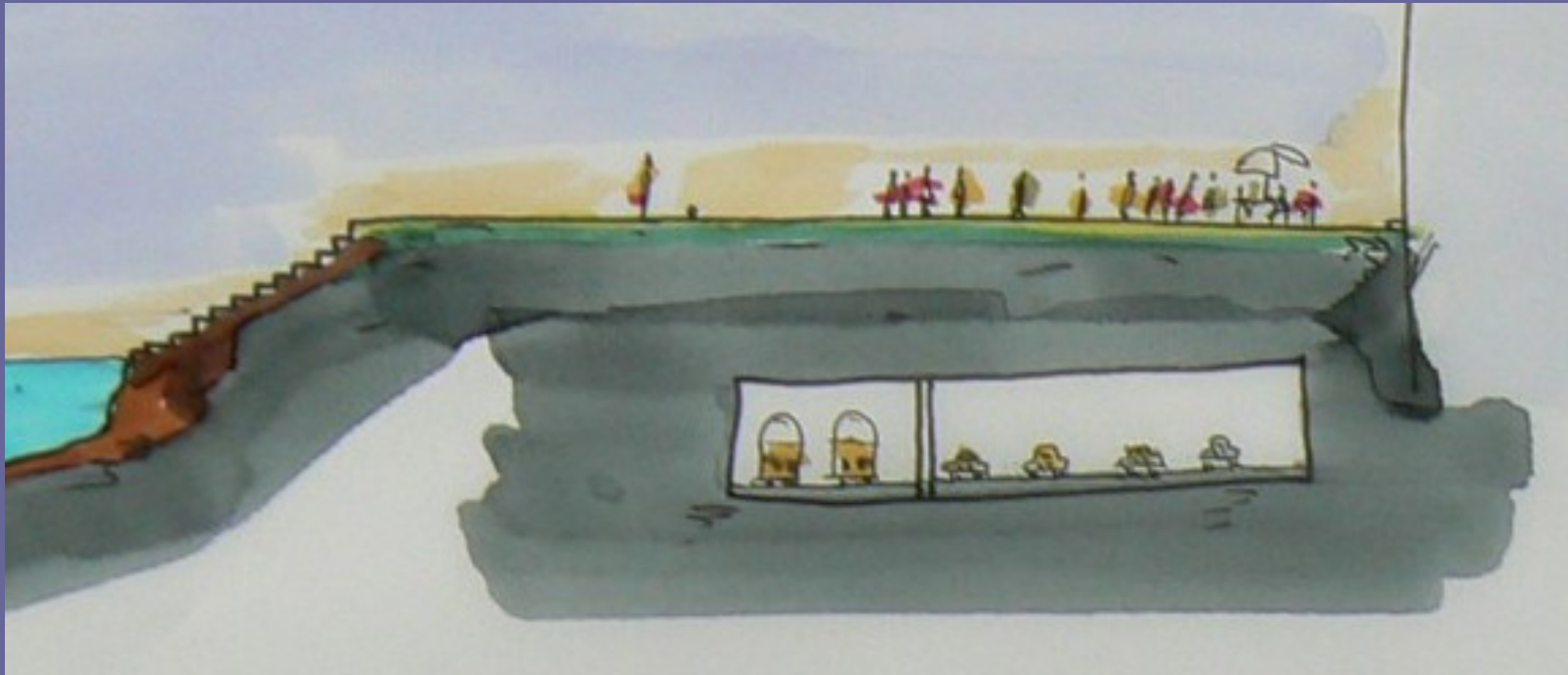
# Key Feature 4: Transport



- Three new transport stations
- Will connect bus, tram and boat
- Boat connection on the River Danube



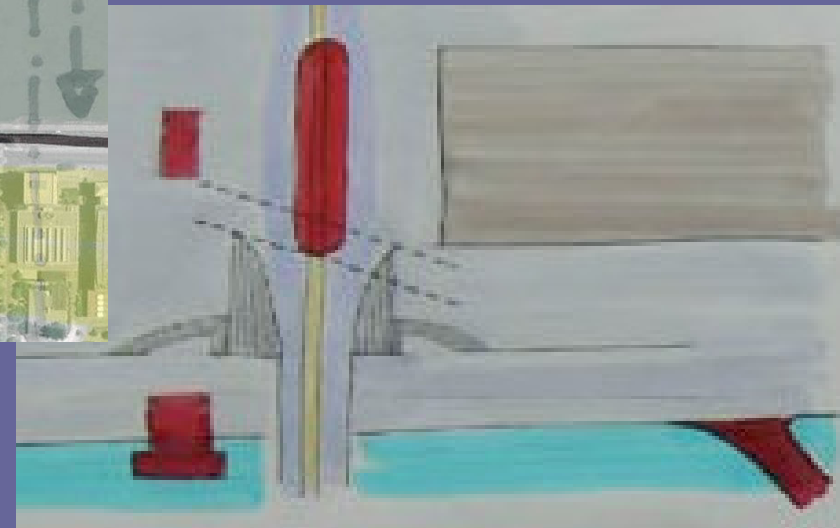
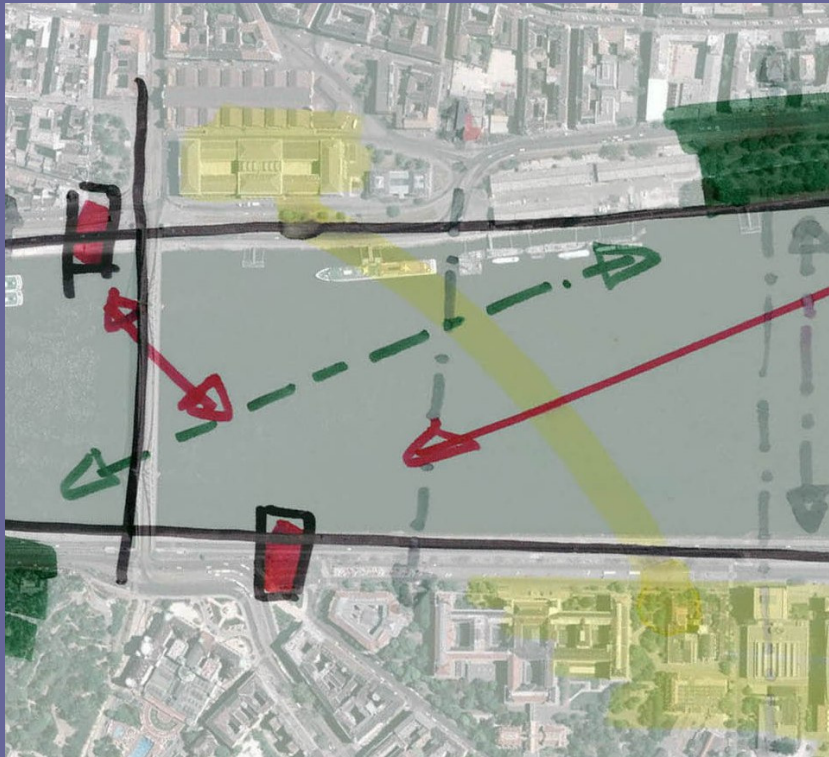
# Key Feature 4: Transport



- Underground car park near Liberty Bridge
- Underground roads under project area
- New footbridge between the two universities

# Key feature 5: University footbridge

- Connects the universities





# Conclusion

- Budapest needs to become more cohesive
- The river should be important to the city.
- Any projects need to benefit the whole city and not one area.

Thank you for listening